

Historic, Archive Document

Do not assume content reflects current scientific knowledge, policies, or practices.

Spring Hill's Fall Bargain Catalog

Visit the Nursery or Mail Your Order . . . Guaranteed Quality . . . Big Savings

Visit
AMERICA'S GREATEST ANNUAL
MUM FIELD
DISPLAY

MILLIONS OF BLOOMS!
ACRES OF PLANTS!
DOZENS OF COLORS!

**BIGGER,
BETTER**



FREE

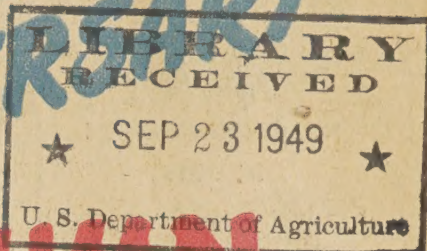
Hardy field grown chrysanthemum (50c value) Free to each family that visits the nursery from Sept. 15 to Nov. 15th. Spring Hill's choice of color and size.

Offer can be changed without notice.

**DOWN TO EARTH PRICES!
SATISFACTION GUARANTEED!**



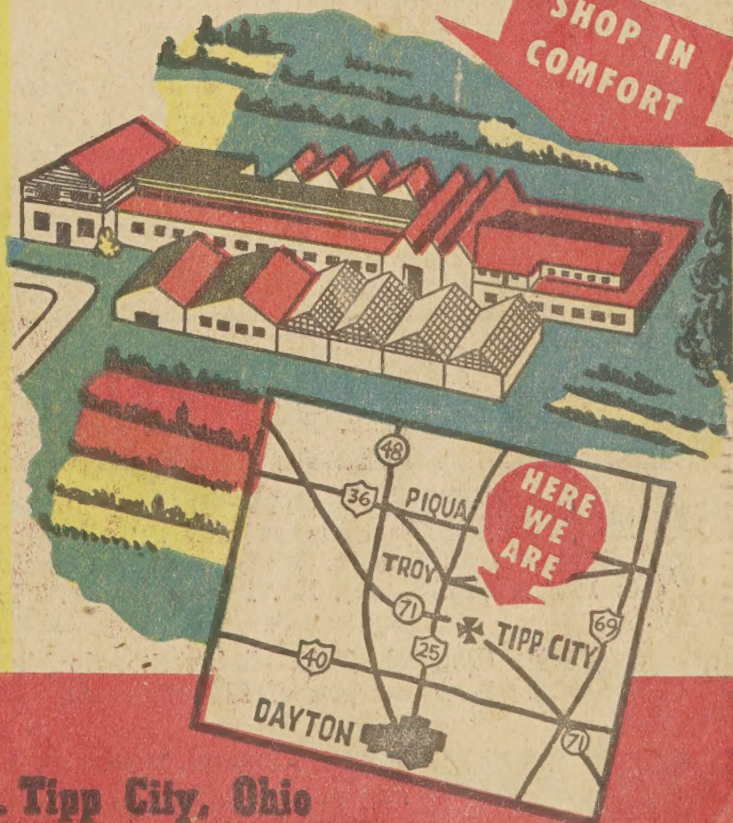
100th
ANNIVERSARY



AUTUMN SALE

Save at America's Largest
Nursery Sales Shed!

**SHOP IN
COMFORT**



SPRING HILL Nurseries

Horticulture Specialists & Consultants Tipp City, Ohio



**HYACINTH CULTURE
IN POTS**

For best results use good loamy top soil, add 1/4 sand and 1/4 rotten manure, peat or any good compost. Pot bulbs in fall or early winter; place in cold frame or good cool, dark location where roots will develop for 3 to 6 weeks. The secret of successful after-growth and blooming is careful watering and keeping plants in good light.

Fragrant Giant Flowering

HYACINTHS

For Home And Garden Decoration



The following Hyacinths listed are the finest obtainable. All are exquisitely fragrant—scenting the entire garden and home. All grow and flower near same time. Easy to grow outside in garden and potted indoors. Culture see below. Large 15-16 centimeter blooming bulbs at lowest prices in years. Fall is the best and only satisfactory time to plant varieties listed.

Large Bulbs 15-16 centimeter

Guaranteed to Bloom

- BISMARCK** 2H1—Bright, sky blue.
- LA VICTORIE** 2H2—Brilliant red.
- MARCONI** 2H3—Bright rose pink.
- PINK PEARL** 2H4—Lovely, light pink.

- L'INNOCENCE** 2H5—Pure snow-white.
- CITY OF HAARLEM** 2H6—Pure yellow.
- KING OF THE BLUES** 2H7—Rich dark blue.



**REDUCED
PRICES**

**3 bulbs 55c, 6 bulbs 95c, 12 bulbs \$1.75,
100 bulbs \$13.50, or 25c each.**

(25 bulbs or more at 100 rate)

DAFFODILS (NARCISSI)

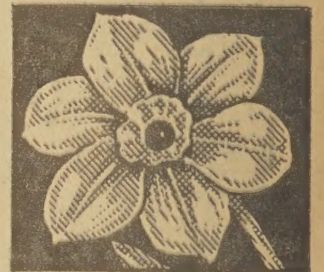
**Bulbs Increase Rapidly
Easy To Grow**

Narcissus—Daffodil "What is the difference?" None whatever, one is the Latin name, the other the English name for same plant. E. A. Bowles in—MY GARDEN IN SPRING.

CULTURE—Daffodils do not require rich ground, however good drainage and average fertility reward the planter with larger and greater abundance of blooms. All varieties listed are suitable for indoor pot culture and all are hardy for outdoor garden planting. All varieties sturdy, withstanding coldest temperatures.

Gay; colorful; long lasting blooms in abundance
(25 or more at 100 rate)

- TUNIS** (Leeds) —2N8—Big, white petals with large, coppery-yellow cup. Recommended. Height 16 in. Double nose bulbs, 3 for 70c; 6 for \$1.20; 12 for \$2.25; 100 for \$17.50.
- TWINK** (Double) —2N9—Alternating petals of primrose and fiery-orange. The bright attractive color fine for decorations, free flowering. Double nose bulbs, 3 for 60c; 6 for \$1.00; 12 for \$1.75; 100 for \$13.50.



Redcup Daffodil



Double Daffodil Twink

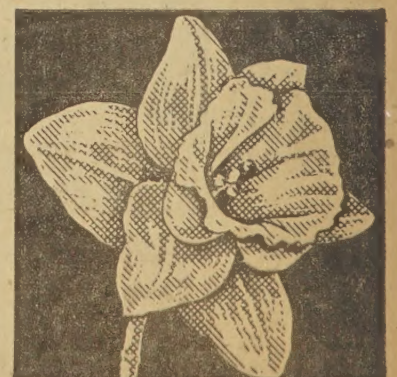
**NEW
LOW
PRICES**

RED CUP DAFFODILS 2N10—Splendid mixture of finest red cup varieties. All free blooming and extremely beautiful. Round bulbs, 6 for 60c; 12 for \$1.00; 100 for \$7.50.

KING ALFRED (Trumpet)—2N11—Rich, lustrous, golden-yellow King of the trumpets fully 2 inches long; petals often 4 inches across. Most popular variety for forcing. Mammoth size, double nose bulbs, 3 for 65c; 6 for \$1.15; 12 for \$2.15; 100 for \$16.75. Big, No. 1 round bulbs, 3 for 45c; 6 for 72c; 12 for \$1.30; 100 for \$10.50.

VON SION (Double)—2N12—A favorite double, bright golden-yellow daffodil. New low prices. Blooming size, round bulbs, 6 for 60c; 12 for \$1.00; 100 for \$7.50.

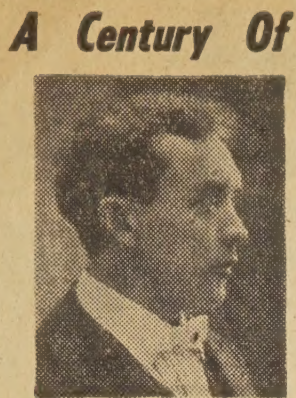
SOLFATAIRE (Trumpet)—2N13—New, extra large white petals with cream cup. Very beautiful. Double nose bulbs, 3 for 60c; 6 for \$1.00; 12 for \$1.75; 100 for \$13.50.



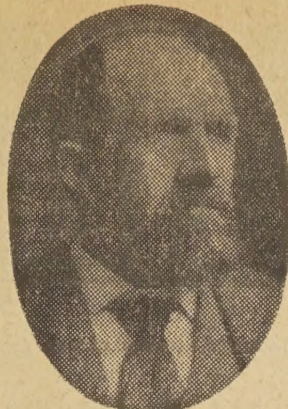
Trumpet Daffodil King Alfred



TOM KYLE
Pres., Gen. Mgr.



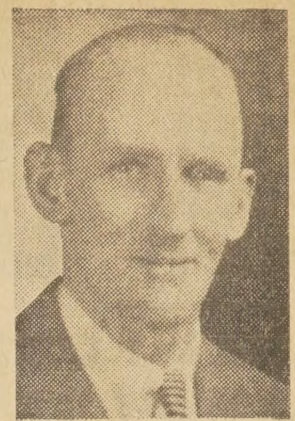
H. N. Kyle
son-in-law, sec'y-
treas. 1909 to 1928



Peter Bohlender
founder 1849



W. F. Bohlender
son and gen. mgr.
1912 to 1936



HOWARD KYLE
Vice Pres., Secy.

A Century Of

Reliable Service

OUR GUARANTEE TO YOU

We guarantee high quality stock, exactly as represented, government inspected, true to name and to arrive safely in healthy, live growing condition. Any plants that reach you otherwise will be replaced free. REPLACEMENTS—We guarantee our plants to grow, bloom and produce if given intelligent handling, proper planting and reasonable care. Weather conditions, carelessness, and lack of experience by the planter are conditions beyond our control; regardless of this, Spring Hill will replace any plants that fail to grow at half the original purchase price if notice is made One Month after delivery of your order. Please enter complaints immediately.

It is mutually agreed that our liability cannot be greater than your original purchase price. **GUARANTEED SATISFACTION.**

To Our Friends:

Spring Hill is proud and grateful for the 100 years of development and growth which has resulted from the patronage, encouragement and cooperation of a great many people. Please accept this autumn 1949 sale catalog as an aid to your planting problems, and the many FREE gifts as an expression of appreciation for your friendship and orders.

Thanks a million for your continued good will.

Sincerely yours,

Tom and Howard Kyle

P. S. We are well known here. (References) Tipp City Chamber of Commerce, Dunn & Bradstreet, Tipp Citizens National Bank, Winter's National Bank, Dayton, Ohio. Unsolicited testimonials of confidence and satisfaction from every state.

IMPORTANT INFORMATION FOR CUSTOMERS WHEN ORDERING

ORDERS ACKNOWLEDGED

We acknowledge all orders.

We return your original order with package for checking. **KEEP YOUR ORDER. IN EVENT OF ANY ERROR, CLAIM OR ADJUSTMENT,** it will be necessary for you to return your original order with your letter. If your order is not filled completely, you will be advised whether or not balance will follow later or amount of any shortage refunded to you.

HOW TO ORDER

Use order-blanks enclosed. List the variety of plants you want, state catalog number, size and price. Advise DATE you wish your order shipped.

TERMS AND REMITTANCE

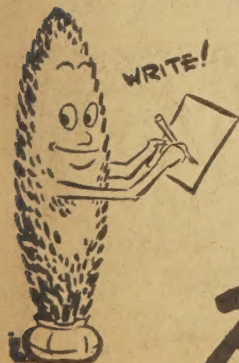
All orders should be accompanied with remittance. Please mail Post Office Money Order, Express Money Order or Personal check. Spring Hill cannot be responsible for currency, stamps, war stamps or cash (wrap coins securely) unless sent by registered mail. No C.O.D. orders accepted.

WAR STAMPS ACCEPTED AS PAYMENT FOR YOUR ORDERS

MAIL YOUR ORDER TODAY

IT'S EASY: SAFE AND ECONOMICAL

Our high grade plants at comparative prices represent some of the greatest values ever offered. Come, see for yourself or mail your order. Over 1,000,000 plants produced annually.



WRITE!



Inside view, America's largest nursery sales shed.



Hundreds of visitors each spring; you are always welcome.

NO AGENTS OR SALESMEN

When dealing direct you get full benefit of our guarantee.

PLEASE ADD POSTAGE IMPORTANT

(Transportation Notice) — When nursery stock or plants are to be shipped by parcel post. Please add 10% for Packing and Postage. This enables us to give our customers the lowest possible selling price for big, first class plants. If you do not include postage charges, your order will be shipped express collect or if requested, we will bill you for the parcel post. Most orders of \$3.00 or more can best be shipped by express. Ohio customers please add 3% sales tax. Note—Fruit and berry producing plants free from 3% Sales Tax.

REDUCED PRICES SAVE

Free plants for visitors. Thousands drive to the nursery each year for their plants. You are always welcome.



Buy Direct

BIG SAVINGS SUPERIOR QUALITY

SPRING HILL NURSERIES CO.

TIPP CITY, OHIO

Established 1849

SELECT
FROM
THESE
CHOICE
VARIETIES

Lovely ★ ★ ★ ★ HARDY LILIES



MAGIC LILY (Lycorus)—4L1—Hardy Amaryllis; surprisingly beautiful clusters of soft flowers; pops out of the ground. Bulbs multiply. **\$1.25 each.**

LEMON LILY (Hemerocallis)—4L2—Hardy tuberous perennial, not a bulb. Extra hardy, profuse blooming with big, yellow blooms for weeks in the summer; multiplies. **35¢ each; 3 for 89¢; 10 for \$2.45.**

FAMOUS REGAL LILY 4L3—The best known and most popular lily. Easy to grow and sure to bloom. The beautiful blooms are white flushed with pink, with creamy-golden throats and delightful perfume. **Blooming size, 33¢ each; 4 for \$1.00. 6 to 8 inch circumference, 55¢ each; 3 for \$1.45.**

Blooming size, 4 for \$1.00

DOUBLE LILY (Tigress Fl. Pl.)—4L4—Best, double lily in cultivation. Absolutely hardy. Beautiful petal arrangement in big, apricot-orange blooms, **5 to 6 inch, 55¢ each; 3 for \$1.45.**

CORAL LILY (Tenuifolium)—4L5—Most vivid, deep, waxy scarlet flowers fine for bouquets. Early blooming; easy to grow. Multiplies. **Jumbo, 3 to 4 inch, 37¢ each; 3 for 95¢.**

RED FUNNEL LILY (Umbellatum)—4L6—Striking coppery-crimson flowers of great brilliance and profusion. Big bulbs that will bloom this spring. Flowers remain pretty for weeks. **Big, healthy, 5 to 6 inch bulbs, 65¢ each; 3 for \$1.75.**

MADONNA LILY 4L7—One of the loveliest white lilies blooming in early spring when its delightful fragrance and purity are appreciated in bouquets and in the garden. **Blooming size, 16 to 18 centimeter bulbs, 37¢ each; 3 for 95¢; 12 for \$2.25.**

3 FOR 95¢



LILIES OF THE VALLEY

4L8—Lovely fragrant creamy-white bells on 6 inch stems. Easy to force indoors, and hardy outdoors. Grows best planted in shady locations. For indoor forcing use light soil. **Guaranteed to bloom, big, 3 yr. pips excellent for indoor blooms, 6 for 78c; 12 for \$1.30; 25 for \$2.45.**

6 For 78c

EARLY TULIP KEIZERSKROON

(Reduced Prices) 4L9 — Brilliant crimson-scarlet with clear yellow edge on each petal. Extra large and striking flowers bloom mid-April. **Height 18 inches. 1st size bulbs, 6 for 85c; 12 for \$1.45; 25 for \$2.65; 100 for \$9.75.**

6 For 85c



GIANT FLOWERING CROCUS

"Spring's 1st Color" (Imported Holland Bulbs)

One of the first flowers in spring; often blooms when late snows are on. Offered in separate colors and mixed. Plant them liberally in any nook, under shrubbery, in the lawn, also excellent for borders. Plant 3 to 4 inches apart, 2 to 3 inches deep. They multiply and last for years. Spring Hill's big bulbs produce more and larger blooms. Easy to bloom indoors; just pot bulbs and sit in window.

Choice of:

Blue, 4B10 Jumbo 9-10 centimeter bulbs.
White, 4B11 Jumbo 9-10 centimeter bulbs.
Yellow, 4B12 Jumbo 9-10 centimeter bulbs.

6 for 39c; 12 for 60c; 25 for \$1.10; 100 for \$3.95.

GUARANTEED MIXED GIANT CROCUS

4B13—Spring Hill's hand made mixtures from named varieties. Guaranteed well balanced mixture of blue, yellow, white and striped. **Big, 8 to 9 c.m. bulbs, 6 for 29c; 12 for 50c; 25 for 95c; 100 for \$3.50. Giant blooming, 7 to 8 c.m. bulbs, 6 for 25c; 12 for 42c; 25 for 75c; 100 for \$2.50.**

Giant Flowering

DARWIN TULIPS

Big First Size Imported Dutch Bulbs

Improved varieties of amazing beauty; massive size; magnificent colors. Exquisite form; strong stems.



GIANT PEONY FLOWERED DOUBLE DARWIN TULIPS

Don't confuse with double, early tulips. Flowers same time as other Darwins. Really wonderful where color is wanted.

COXA 5T14—Cherry-red with orange edges. Sweet scented; long lasting. 3 for 45c; 6 for 85c; 12 for \$1.60; 25 for \$3.25.

EROS 5T15—Extra large soft rose. Resembles peonies; most outstanding. 3 for 45c; 6 for 85c; 12 for \$1.60; 25 for \$3.25.

MOUNT TACOMA 5T16—Magnificent giant double, pure white. Highly recommended. 3 for 50c; 6 for 89c; 12 for \$1.75; 25 for \$3.50.



Parrot Tulip Fantasy

ALBRIGHT 5T1—New, brilliant, rich red Darwin hybrid.

BARTIGON MAX COCHINEAL 5T2—Bright cherry-red. Never fails to bloom.

ALLARD PIERSON 5T3—Rich velvety shades of deep crimson-maroon.

YELLOW GIANT 5T4—Tremendous size, pure, deep satin yellow.

GOLDEN HARVEST 5T5—One of the best dependable bloomers, bright yellow.

PHILIPPE SNOWDEN 5T6—Bright carmine; rare; excellent in every way.

PRUNUS 5T7—Lovely soft, salmon-pink; admired for color; excellent for bouquets.

WM. COPELAND 5T8—Bright violet, nice big blooms.

ROSE COPELAND 5T9—Lilac-rose. Unusual color of great beauty.

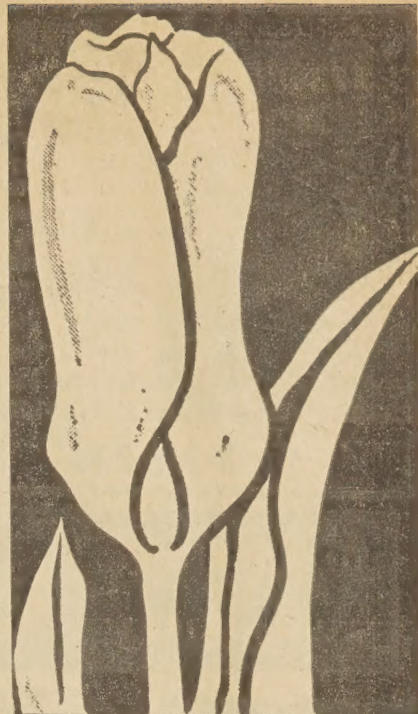
ARGO 5T10—Lovely orange with apricot edges. Excellent in its color.

BERNICE 5T11—Lovely, big, white. Beautiful in a mixed bed.

CORDELL HULL 5T12—New, red with broad white stripes. Unusual and beautiful.

Choice of above 12 choice Darwin tulips all 1st size, 11 to 12 c.m. imported Dutch bulbs. 6 for 70c; 12 for \$1.19; 25 for \$2.20; 100 for \$7.95.

New Reduced Prices



WORLD'S LARGEST TULIP

RED EMPEROR—5T13—Largest of all tulips. Brilliant, scarlet and so big; petals often 4½ inches long when open, blooming large as dinner plates. Truly a beautiful novelty. 11 to 12 c. m. 1st size bulbs, 20c each; 3 for 48c; 6 for 90c; 12 for \$1.69.

PARROT or DRAGON TULIPS

Attractive fringed petals beautifully colored. Interesting, unusual, wonderful for cutting.

PARROT TULIP FANTASY 5T17—The most exquisite novelty tulip in existence. It is a lovely delicate pink color shading to deep rose at the base and on the interior. Brilliant splashes of emerald-green on the pink feathery fringed petals give it all the vividness of the tropics. Special reduced prices, 6 for 75c; 12 for \$1.29; 25 for \$2.45; 100 for \$8.95.

BLUE PARROT 5T18—Glorious bright violet shading to steel blue, highly recommended. 6 for 75c; 12 for \$1.29; 25 for \$2.40; 100 for \$8.80.

RED CHAMPION 5T19—Huge flowers of bright crimson carried on strong stems. Very scarce; recommended. 3 for 65c; 6 for \$1.20; 12 for \$1.95; 25 for \$3.75.

SUNSHINE 5T20—Large, golden-yellow; tall, best of yellow parrot tulips. Large, tall, strong growing free flowering. 3 for 70c; 6 for \$1.30; 12 for \$2.25.

Dear Sirs:
The items ordered from you have given me much pleasure this summer. My Mons Monet Tulips are in bloom now and are beautiful.
Mrs. C. W. Storey
Norris City, Illinois

BUNCH FLOWERED OR TREE TULIPS



A bouquet or several flowers on one stem. This class of tulip is unique in its blooming.

MONS MONET—5T21—Beautiful white overlaid with pink. 3 for 45c; 6 for 79c; 12 for \$1.40; 25 for \$2.55.

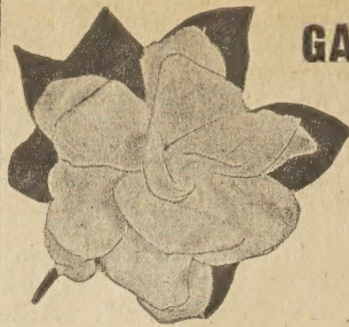
Giant Darwin Rainbow Tulip Mixture 25 for \$1.00, 100 for \$3.95, see back cover



STAR OF BETHLEHEM

6B1—A profusion of crispy-white blooms. Hardy, multiplies; easily grown indoors or garden. Winter hardy; bulbs multiply. Pot for indoor blooms. Jumbo top size, 3 for 30c; 6 for 50c; 12 for 85c; 25 for \$1.50.

3 for 30c



GARDENIA

6B2 — (Veitchii) Fragrant, everblooming, exquisite white blooms. Not hardy - pot indoors. Growing instructions and plant food

with each order. 6 to 8 inch plants, 49c each; 3 for \$1.25. Blooming size, \$1.45 each; 3 for \$3.95.

3 for \$1.25



GRAPE HYACINTH

6B3 — (Muscari) Dainty blue spires resembling miniature hyacinths. Perfectly hardy and easy to pot and bloom indoors. Bulbs multiply. Select jumbo size, 3 for 35c; 6 for 60c; 10 for 89c; 100 for \$6.95.

3 for 35c

Interesting And Rare

Unusual Plants

At Big Savings



MYSTERY BULB

6B4 (Colchicum) — Lovely, lilac-pink blooms without water - without care - and without soil. Place on desk or window and it blooms. Surprise your friends, plant bulb after blooming. Perfectly hardy. 50c each; 3 for \$1.25; 12 for \$4.75.

3 for \$1.25



DECORATIVE FERNS

Hardy at sub-zero temperatures, decorative in your garden and bouquets. Succeeds best in shady-moist locations. All plants big 2 and 3 year clumps.

OSTRICH FERN 6P6 — Graceful, tall growing. One of the best

ROYAL FERN 6P7 — Handsome, glossy foliage; semi-dwarf.

CINNAMON FERN 6P8 — Upright growing, tall with attractive foliage.

Choice of above 3 varieties ferns; 38c each; 3 for \$1.00; 6 for \$1.79; 12 for \$3.35.

RED FLOWERING DOGWOOD

6T9—(Cornus Florida Rubra) A magnificent sight when blooming. Big, rose-red blooms in early spring fill the dwarf, round headed trees. New, low prices. Grafted, 1 ft. trees, \$1.15 each.



CROWN IMPERIAL

6B10—(Fritillaria Imperialis)—Has brilliant orange-scarlet blooms in big clusters. Famous for flashy color, profusion of blooms each spring. Grows for years without replanting. Plant immediately. (Not good for potting). Jumbo No. 1 blooming bulbs, 60c each; 3 for \$1.65; 10 for \$4.90.

3 for \$1.65

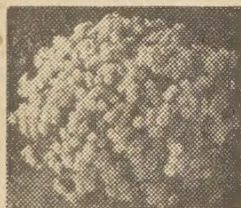
BLACK MAGIC IRIS

6P5 — (Autumn Flowering Iris) Flowers spring and fall. A double duty iris that not only blooms in the spring but also again in the fall. Exquisite rich, velvety-purple color.



3 for \$1.15

Nearly black with satin sheen. 45c each; 3 for \$1.15.



Dwarf Hardy ASTERS

Compact mounds like above picture. Hundreds of blooms perfectly hardy. Grow from year to year without replanting.

VICTOR (Blue)—6A11
LADY MADDOCK'S (Pink) 6A12

NIOBE (White)—6A13
Choice of above 3 varieties; field clumps, 38c each; 3 for \$1.00.

PAGE SIX

World's Finest GLOXINAS

Imported from Belgium for December delivery. Delivery about December 1st. New, imported, brilliantly colored varieties. Most easy and simplest of flowers to grow. Bulbs can be grown again and again. Nothing is more showy than the large, soft, downy, conspicuously veined leaves filled with the gorgeous velvety bell-shaped flowers that last for months. Plant in pots from late fall to May for blooms all season. Choice of 4 varieties.

FIREKING—6A14—Brilliant crimson-scarlet.

MONT BLANC—6A15—Pure white.

PRINCE ALBERT—6A16—Rich blue.

TIGRINA—6A17—Spotted and laced varieties of all colors.

Choice of above varieties, 44c each; 3 for \$1.15; 6 for \$2.10... 12 for \$3.95



VESPER IRIS

6P18 — New, long blooming iris. Hundreds of multi-colored jewel-like flowers in July and August. 29c each; 3 for 72c; 6 for \$1.30.



Spring Hill's Sensational EXTRA VALUE PAGE 1c buys an extra article

Old Fashioned Carnations

7P7 — Lovely, double and single blooms. Silvery foliage; fragrant blooms, pastel colors. 2 yr. size 35¢ each;



SALE PRICE
2 for 36¢



**PRINCE OF WALES
VIOLETS**

7P5—Fragrant, hardy everblooming plant. Large, deep purple violets spring and fall. Thrives in sun or shade. 2 yr., 55¢ each;

SALE PRICE
2 for 56¢



**SHASTA DAISY
CONQUEROR**

7P2—Extra large, white flowers if kept cut, blooms throughout the summer. Excellent for bouquets. Sturdy 2½ ft. stems, 2 yr. plants, 30¢ each;

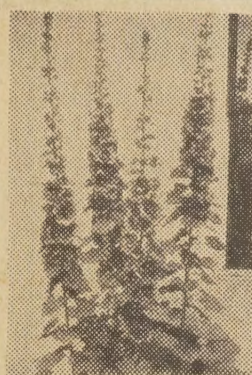
SALE PRICE
2 for 31¢



INDIAN LILY

(Camassia) 7B3 — Very hardy, grows well. Big, royal blue blooms for long period. Bulbs multiply. Select, jumbo bulbs, 29¢ each;

SALE PRICE
2 for 30¢



**HOLLYHOCK
INDIAN SUMMER**

7P4 — Exquisite bright, single blooms of immense size. Imported Holland strain. Mostly red and pink, no choice of colors. 25¢ each;

SALE PRICE
2 for 26¢



BLUE SPRUCE

(Picea Pungens Glauca) 7E1 — Good blue spruce commands the highest prices. 4 years old, branched 8 to 10 inches tall. An exceptionally good value. 98¢ each;

SALE PRICE
2 for 99¢



HARDY HIBISCUS

(Giant Hybrids) 7P6 — The largest summer flowering perennial. Pastel colors, pinks and reds. Big, 2 yr. plants, 33¢ each;

SALE PRICE
2 for 34¢



SILVER MAPLE

7T8—Fastest growing of all maples and one of the most beautiful. Attractive red and gold autumn foliage. 4 yr. transplants, 6 ft. size, \$1.75 each;

SALE PRICE
2 for \$1.76

Economy SHADE TREES BEST VARIETIES

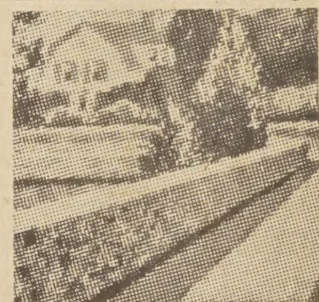
Outclassing all competition in small, straight, healthy trees. Best varieties.



SENSATIONALLY LOW PRICES



WEeping WILLOW (Select weeping strain) 3 ft. size, 55¢ each	7T9	SALE PRICE	2 for 56¢
WHITE BIRCH European (Snow-white bark) 5 ft., \$1.65 each	7T10	SALE PRICE	2 for \$1.66
CHINESE ELM (Fast growing strain) 5 to 7 ft., \$1.89 each	7T11	SALE PRICE	2 for \$1.90
SILVER MAPLE (Fastest growing maple) 3 ft. size, 50¢ each	7T12	SALE PRICE	2 for 51¢
LOMBARDY POPLAR (Tall, narrow) 3 ft. size, 40¢ each	7T13	SALE PRICE	2 for 41¢
CHINESE ELM (Fast growing strain) 3 ft. size, 50¢ each	7T14	SALE PRICE	2 for 51¢
SUGAR MAPLE (Sturdy and reliable) 3 ft., 65¢ each	7T15	SALE PRICE	2 for 66¢
RED BUD (Beautiful in spring) 2 ft., 60¢ each	7T16	SALE PRICE	2 for 61¢



HARDY PRIVET

(Amur River North) 7H17—Hardest privets; makes a beautiful clipped hedge. Field grown plants, 2 yr., 1 ft. hedging size, 20¢ each; 2 for 21¢; 49 for \$3.98.

SALE PRICE

50 for
\$3.99



**PEACH TREE
SPECIAL**

7P18—Grafted, freestone varieties. Your choice of early or late; Spring Hill's choice of varieties listed on page 12. 3 ft. plants, 98¢ each;

SALE PRICE
2 for 99¢



**DOUBLE COREOPSIS
SUNBURST**

7P19 — Brilliant, rich golden-yellow. Big, double blooms in profusion. Big, 2 yr. blooming size, 25¢ each;

SALE PRICE
2 for 26¢



**TOM THUMB
IRIS**

7P20.— Miniature darlings; clumps often have over 100 blooms. Choice of white, reddish-violet, blue and yellow. 42¢ each;

SALE PRICE
2 for 43¢



**SWEET
WILLIAMS**

7P21—Assorted harmonious pastel colors. Mostly beautiful shades of red and pink. Giant blooms fine for bouquets. 33¢ each;

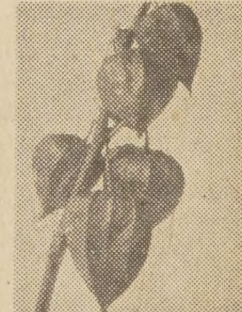
SALE PRICE
2 for 34¢



**EVERBLOOMING
DWARF
DELPHINIUM**

(Chinensis) 7P22—Lovely dark and light blue colors from reselected seed. 2 yr. size, 26¢ each;

SALE PRICE
2 for 27¢



**CHINESE
LANTERN**

7P23—Nice, hardy perennial. Blooms make excellent winter bouquets. 27¢ each;

SALE PRICE
2 for 28¢

Grow Your Own Small FRUITS

MORE HEALTHFUL—MORE ECONOMICAL—FROM YOUR OWN GARDEN

NEW, GIANT BOYSENBERRIES

8BB1—Extra large, fancy berries often 1½ to 2 inches long of beautiful color and superb quality. Excellent for eating, canning and cooking. Six plants yield sufficient fruit for the average family. Select high yielding strain that bears the next year after planting. No. 1 plants, 3 for 79c; 6 for \$1.30; 12 for \$2.25; 50 for \$7.25. Bearing age transplants, 40c each; 3 for \$1.00; 6 for \$1.75; 12 for \$2.95.



THORNLESS BOYSENBERRIES

8BB2—More winter hardy and higher yielding than regular boysenberry. Easier to pick and work with in every way. Ripens ten days earlier. 3 for 90c; 6 for \$1.49; 12 for \$2.65; 50 for \$7.95. Bearing age transplants, 50c each; 3 for \$1.25; 12 for \$3.30.

ELDERBERRY ADAM'S IMPROVED

8BB3—New York Experiment Station hybrid propagated for its extra large fruit and big crops. The largest and highest quality Elderberry in existence. Splendid for pies, jellies, wines; also many people enjoy eating the fresh fruit of Adam's Improved variety. Big fruiting size, 3 ft., 65c each; 3 for \$1.75.



USE OUR "EASY TO SUBSCRIBE" MAGAZINE SERVICE

Enclosed in this catalog is a subscription order blank making it easy for you to order your favorite magazines at lowest prices. Save time, trouble and expense and be assured of safe, prompt service. Merely send your order for the magazine you want to FARM JOURNAL SUBSCRIPTION SERVICE DEPT., Farm Journal Bldg., Philadelphia 5, Penna., together with check, money order, or cash, covering the subscription prices of the magazines you select for your entire family.

IT'S EASY TO GROW YOUR OWN ASPARAGUS

GIANT WASHINGTON ROOTS—8A4—Grows well in most all soils and locations. When cared for, beds improve with age and last for many years. Fresh cut from your garden is best. Big annual yields. Giant Washington was developed under auspices of U. S. Dept. of Agriculture and is considered the leading variety. Practically immune to rust and has longest cutting period. Giant size, straight tender, dark green stalks, tinged purple.

Size	6	12	25	100
1st class, 1 yr.	.49	.80	1.25	3.05
1st class, 2 yr.	.75	1.15	1.98	5.95
Jumbo, 3-4 yr.	.89	1.49	2.65	8.75

PAGE EIGHT



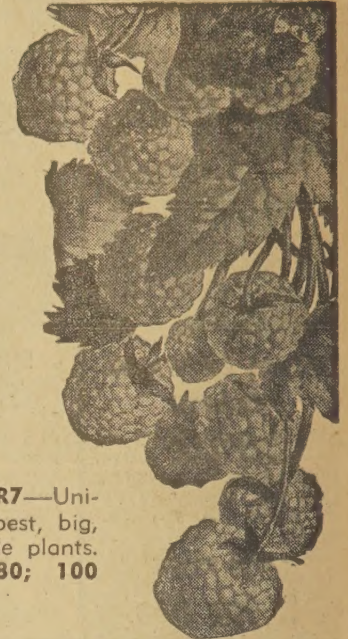
RASPBERRIES

CUMBERLAND (Black Raspberry) 8R5 The most popular variety for years. Select, high-yielding, large fruiting strain. No. 1 tips, 6 for \$1.00; 12 for \$1.50; 25 for \$2.50; 100 for \$7.95.

NEW LOGAN (Black Raspberry) 8R6 Rated the best variety for yields, quality, hardiness and disease resistance. No. 1 tips, 6 for \$1.00; 12 for \$1.50; 25 for \$2.50; 100 for \$7.95.

GIANT LATHAM (Red Raspberry) 8R7—Universally rated the best, big, high quality variety. Extra select 1st grade plants. 6 for \$1.25; 12 for \$1.85; 25 for \$2.80; 100 for \$9.50.

EVERBEARING INDIAN SUMMER (Red Raspberry) 8R8—Our finest spring and fall bearing raspberry. Large, sweet fruit of highest quality. Very popular. Select No. 1 grade will bear next year. 6 for \$1.65; 12 for \$2.75; 25 for \$3.95.



GIANT TASTY RHUBARB

Drastically Reduced Prices Same Quality and Size

LINNEAUS RHUBARB 8R9—Hardy, grows for years without re-planting. Wonderful for pies, sauces, wine and canning. High yielding. 2 yr. hand graded whole roots, 29c each; 3 for 75c; 10 for \$2.15. Jumbo, 3 yr., 50c each; 3 for \$1.25.

VALENTINE RHUBARB 8R10—New, extra large stalks; red, juicy and tender all season. Rated the finest seedless rhubarb on the market. Big, 2 yr., No. 1, \$1.00 each; 3 for \$2.75.

CANADIAN RED RHUBARB 8R11—One of the finest, new, red varieties. Sweet, juicy and tender all season. Seedless, grown from hand cut divisions. Big, 2 yr. No. 1, 69c each; 3 for \$1.85; 12 for \$6.98.

GIANT RED McDONALD 8R12—Giant stalks, and very tender; vigorous and hardy. Spring Hill guarantees true imported strain. Hand cut crown divisions. Big, 2 yr. No. 1 69c each; 3 for \$1.85; 6 for \$3.50; 12 for \$6.98.

SPECIAL 8R13—1 New Valentine; 1 Canadian Red; 1 Giant McDonald. Regular \$2.48 catalog value.

ALL 3 FOR \$1.95



STRAWBERRIES

Low Prices . . . Hi Quality . . . America's Best For Every Home and Commercial Planting.

Plant for Economy . . . Many Will Fruit This Summer . . . All Government Inspected.

PREMIER 9S1—Dependable, extra early, heavy yielding berry. Most planted of all varieties. Big bright red sweet berries of highest quality. 25 plants \$1.35; 50 plants \$2.15; 100 plants \$3.25; 500 plants \$9.85.

ROBINSON 9S2—Largest and fanciest; outstanding, new, giant strawberry. Big, glossy, scarlet-red to the heart, sweet, juicy; delicious. Recommended. 25 plants \$1.35; 50 plants \$2.15; 100 plants \$3.25; 500 plants \$9.85.

SENATOR DUNLAP 9S3—Fine for freezing. Dependable, a sure bearer, tremendous yields of large, high quality berries. A favorite for canning. 25 plants \$1.25; 50 plants \$1.95; 100 plants \$2.75; 500 plants \$8.95.



Everbearing MASTADON

SPECIAL 9S7 50 Premier
50 Senator Dunlap
50 Robinson **150 For \$4.95**
Regular \$6.25 catalog value. Save ~~over~~ 20%



EVERBEARING MASTADON 9S4—Extremely large. A leader in quality, size, dependability and yields. Plant now for fruit this summer. 25 plants \$2.15; 50 plants \$3.45; 100 plants \$5.50; 500 plants \$17.50.

EVERBEARING GIANT GEM 9S5—The leading commercial everbearing strawberry. Enormous yields of beautiful hi-quality berries the first summer. 25 plants \$1.95; 50 plants \$3.00; 100 plants \$4.75; 500 plants \$15.00.

EVERBEARING SPECIAL

Catalog No. 9S6 50 Giant Gem
50 Mastadon

100 For \$5.15

Regular \$6.45 catalog value. Save 20%



HOLT'S MAMMOTH SAGE

9S8—Dried leaves indispensable for seasoning. Beautiful, hardy perennials last for years with big, bluish-grey leaves and beautiful, lavender flowers. 2 yr., 39¢ each; 3 for \$1.10. 1 yr., 27¢ each; 3 for 69¢; 12 for \$2.45.

12 for \$2.45

HARDY CHIVES



9C9—A hardy onion-like plant that grows each year without re-planting. Splendid for seasoning salads, omelets, etc. Pot and force indoors during winter. Clumps, 50c each; 3 for \$1.25. 2 yr. plants, 30c each; 2 for 49c; 6 for \$1.25.

6 for \$1.25

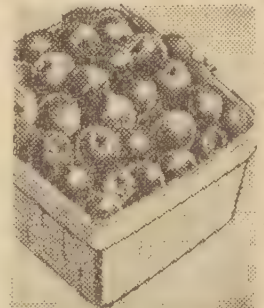
Snappy Horseradish



(Maliner Kren)—9H10—Famous for crisp, snappy flavor. Noted for large yields of extra large, white roots, easily grown. Big crown plants. 25c each; 3 for 60c; 10 for \$1.75. Rooted cuttings, 3 for 42c; 12 for \$1.45;

12 for \$1.45

Apple Juneberry



(Amelanchier) 9S11—Dark red apple-like fruits excellent for eating and cooking. A beautiful, shrub-like plant. Hardy and easy to grow. Bears 2nd year. Fruiting age, big 3 ft. size, \$1.00 each; 3 for \$2.75; 10 for \$8.50.

3 for \$2.75

Blackberries • Dewberries

NEW ALFRED BLACKBERRY

9BB13—Almost coreless, high yielding, immense size, delicious flavor. Good for home and commercial planting. No. 1, 6 for \$1.25; 12 for \$1.75; 25 for \$2.85; 100 for \$9.60.

ELDORADO BLACKBERRY

9BB14—Hardest, dependable variety. Unsurpassed for quality. Highly recommended. No. 1, 6 for \$1.15; 12 for \$1.65; 25 for \$3.25; 100 for \$9.45. Bearing age, 2 yr. transplants, 3 for 85c; 6 for \$1.50; 12 for \$2.50; 25 for \$4.50.

LUCRETIA DEWBERRIES

9DB15—Most desirable and profitable early berry. Larger than blackberries, first to ripen. Big, glossy, black fruit brings high market prices. No. 1 size, 6 for \$1.10; 12 for \$1.55; 25 for \$2.45; 100 for \$8.75.

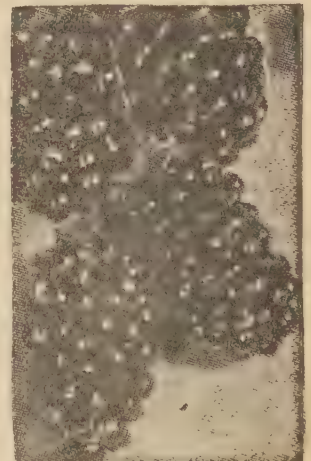
ICEBURG BLACKBERRY

9BB16—The novel white blackberry. Sweet, creamy-white, hi-quality; plant with blackberries for pollination. 35c each; 3 for 85c.



PAW PAW (Custard Apple) 9T12—Handsome, dwarf trees. Attractive cinnamon-colored flowers, beautiful foliage. Large, golden-fleshed banana-like fruit usually 6 to 8 inches long. Most people like to eat the fruit raw. 2 to 3 ft., 98c each; 3 for \$2.75.

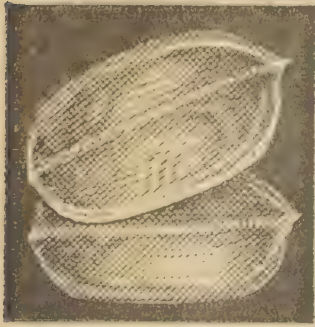
3 for \$2.75



Eldorado Blackberry

Dear Sir:
I received my order in very good condition and I want to thank you very much for your prompt attention.
V. Breitshwert
Skokie, Illinois

Finest Hardy - High Yielding - NOVELTY NUT TREES



Northern HARDY PECAN

10T1—Hardy and sturdy as an oak. A beautiful, rapid growing shade tree that yields bushels of fine nuts 2 to 2½ inches long. Large, thin-shell nuts; easy to crack. 2 yr. seedlings, 1 ft. size, 49¢ each; 3 for \$1.25; 10 for \$3.90. 3 yr., 2 ft. size, 69¢ each; 3 for \$1.85; 10 for \$5.85. 4 yr., 3 ft. size, \$1.49 each; 3 for \$4.20.

1 ft. size, 10 for \$3.90

MANCHURIAN CHESTNUT

(Blight Resistant) 10T2—Will bear second or third year after planting when still small. Trees guaranteed a blight resistant strain. The nuts are 1 to 1½ inches across, comparing in size, quality and sweetness to the best native chestnuts. 2 yr., 1½ ft. tall, \$1.00 each; 3 for \$2.75. 3 yr., 3 ft. size, \$2.50 each; 3 for \$6.75.

1½ ft. size \$1.00 Ea.



THOMAS WALNUT

10T6—Improved, grafted, black walnut of immense size, thin shelled, easy to crack. Bears young, grows fast and will thrive well in every state. Valuable for timber and big nut crops. Rated our best, easy bearing black walnut. Big, heavy grafted trees,

3 to 4 ft. size, \$2.85 each



JAPANESE WALNUT

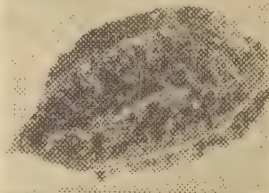
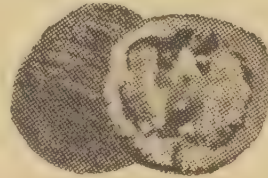
10T3—Tree is very handsome and has a large spreading top, useful as well as ornamental. Begins to bear at age of three years. Shell moderately thick; kernel very sweet. Highly recommended for ornamental shade tree. Useful for big yields of sweet nuts. 2 yr., 1 ft. size, 65¢ each; 3 for \$1.75; 10 for \$5.50.

1 ft. size 3 for \$1.75

BLACK WALNUT

10T4—Large fruiting timber strain from Central Ohio. They are excellent lumber trees and yield an abundance of large, meaty nuts. 2 ft. size, 2 for 36¢; 10 for \$1.45. Heavy, 6 to 8 ft., \$3.00 each; 3 for \$8.25.

Low as 10 for \$1.45



BUTTERNUT (*Juglans Cinerea*) 10T5—Big, pecan-shaped nuts with rich, white meat of wonderful flavor. Hardy, fast growing, high-yielding trees. Valuable for timber and shade. 2 ft. size, 40¢ each; 2 for 75¢; 10 for \$3.45. 4 ft., \$1.25 each.

Low as 2 for 75c



AMERICAN HAZEL NUT

(*Corylus Americana*) 10T7—Easy to crack and shell. Excellent, large, sweet kernels are produced in abundance on low, shrubby plants never growing over 6 ft. tall. One plant yields a peck of nuts. 1½ ft., 40c each; 2 for 75c; 6 for \$2.10; 25 for \$8.25. Fruiting age, 4 ft., \$1.35 each; 3 for \$3.75.

6 for \$2.10



American Bush Cranberry

(*Viburnum Americana*) 10S9—Makes good sauces, jellies and jams. Americana strain, large white flowers and scarlet fruits, tall, compact plants. Beautiful, red berries remain pretty till late winter and are edible. Big, 3 ft. size, 90¢ each; 3 for \$2.55; 6 for \$4.95.



Buffalo Berries

(*Shepherdia*) 1088—Beautiful silvery foliage, tall growing ornamental shrubs filled with thousands of small, red berries prized for eating and cooking by Indians. Dried berries fine for seasoning. 2 ft., 49¢ each; 2 for 90¢; 10 for \$4.25. 3 ft. size, \$1.00 each; 2 for \$1.89.

2 for 90c



RED LAKE CURRANT

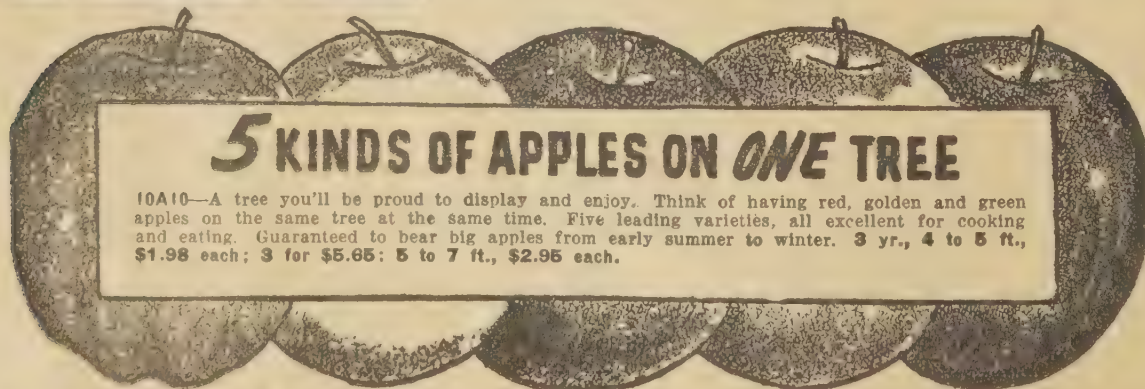
10C11—Recommended for abundance of large, high quality fruit. 2 yr., 65¢ each; 3 for \$1.75; 10 for \$5.35. 3 yr., fruiting age, 90¢ each; 3 for \$2.55.

3 for \$2.55

WILDER CURRANT

10C12—Favorite with commercial growers. Unexcelled. 2 yr., 55¢ each; 3 for \$1.45; 10 for \$4.50. 3 yr. fruiting age, 80¢ each; 3 for \$2.20.

3 for \$2.20



5 KINDS OF APPLES ON ONE TREE

10A10—A tree you'll be proud to display and enjoy. Think of having red, golden and green apples on the same tree at the same time. Five leading varieties, all excellent for cooking and eating. Guaranteed to bear big apples from early summer to winter. 3 yr., 4 to 5 ft., \$1.98 each; 3 for \$5.65; 5 to 7 ft., \$2.95 each.



NEW LOW PRICES

GOLDEN MUSCAT

11G1—A new, hardy, hybrid, California-type grape. Large bunches of delicious golden fruit which have only a few seeds. A new and different grape for the Middle West, which we highly recommend for trial. **2 yr., 69c each; 3 for \$1.95; 12 for \$7.20. 3 yr., 98c each; 3 for \$2.75.**

VICTORY VINEYARD

Collection number 11G2

One Red, White and Blue. A wonderful selection for the home.

- 1 Red Caco, 2 yr. .50
- 1 White Niagara, 2 yr. .40
- 1 Blue Concord, 2 yr. .35

(Certified \$1.25 catalog value)

Save 25%

All 3 for **98c**

WONDERFUL NEW GRAPES

VAN BUREN—11G3—Positively the best early ripening grape. Superior quality, size, color and bigger yields of black fruit. Highly recommended. **2 yr., 69c each; 3 for \$1.95. 3 yr., 98c each; 3 for \$2.85.**

SENECA—11G4—New, hardy, yellow skinless California grape. Sweet, melting, delicious flavor, golden fruit. Vigorous. **2 yr., \$1.15 each; 3 for \$3.25. 3 yr., \$1.40 each; 3 for \$3.90.**

NIAGARA—11G5—Favorite and dependable white grape. Big bunches, large berries; splendid quality. **2 yr., 40c each; 3 for \$1.10; 10 for \$3.50. 3 yr., 50c each; 3 for \$1.35.**

CONCORD America's Favorite Grape

11G6—Most popular grape in world. Big, dark blue, sweet, juicy fruit in abundance. **2 yr., 35c each; 3 for 79c 6 for \$1.40; 25 for \$4.95. 3 yr., 45c each; 3 for \$1.15; 10 for \$2.85.**

CACO—11G7—Big, sweet, red grape. Early to bear, large, compact bunches of the best quality. **2 yr., 50c each; 3 for \$1.35; 10 for \$4.25. 3 yr., 69c each; 3 for \$1.95.**

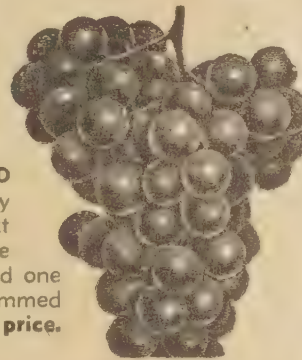
SEEDLESS CONCORD—11G9—Like Concord in color, growth and foliage. Sweeter and better to eat than Concord but bunches are smaller. **2 yr., 89c each; 3 for \$2.50. 3 yr., \$1.15 each; 3 for \$3.30.**

AGAWAM—11G10—High yielding, quality, red grapes. Fine for eating and jellies. **2 yr., 40c each; 3 for \$1.10; 10 for \$3.50. 3 yr., 50c each; 3 for \$1.35.**

BEARING AGE GRAPE VINES

LARGE BEARING-AGE CONCORD GRAPE VINES—11G11—Enjoy grapes from your own vines next fall. Plant now!! The vines we will send you have already produced one crop of fruit. **CONCORD ONLY, trimmed for planting. Special low pre-war price. 90c each; 3 for \$2.35.**

90c each.



CHAMPION GOOSEBERRY—11GB12

Large, green and gold berries.

RED JACKET GOOSEBERRY—11GB13—Sweet, deep red fruit.

Choice of Champion or Red Jacket. **2 yr., 72c each; 3 for \$2.00; 10 for \$6.25. 3 yr. fruiting age, 98c each; 3 for \$2.80.**

3 For \$2.00

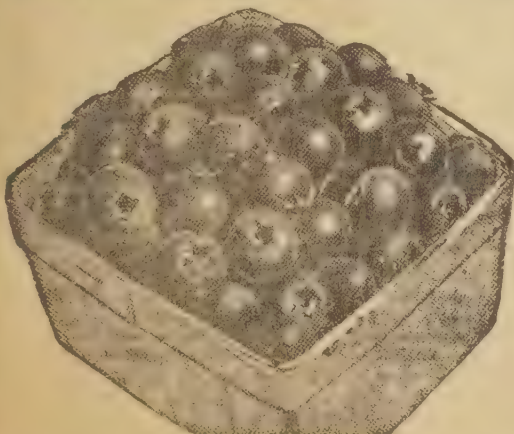


PROF. HANSEN'S CHERRIES

11GB14—Dwarf, quick bearing bush cherries developed at South Dakota State College. Beautiful dwarf shrub-like, silvery foliaged plants. Fruit larger than cherries and plum-shaped. Fine for jams and sauces. Plant in shrub border or as a hedge. **3 ft., fruiting plants, \$1.00 each; 3 for \$2.50. 2 yr., 1½ ft. size, 60c each; 3 for \$1.60; 10 for \$4.95.**

3 For \$2.50

GIANT BLUEBERRIES



New giant U. S. Dept. of Agr. cultivated blueberries famous for size, flavor, profit, and beauty. The attractive plants are beautiful in flower and are handsome, dwarf, glossy foliaged shrubs. The beautiful clusters of pink buds and white bell-shaped flowers are followed by the sapphire blueberries in big clusters, often as large as grapes. Two or more varieties should be planted together for good yields. Blueberries require acid soil. If soil is sweet or alkaline, use peat moss or decomposed vegetable matter mixed with aluminum sulphate. The period of ripening covers several weeks. Plants last a lifetime and have no thorns. Easy to pick. Your choice of **11BB15 CABOT**—early; **11BB16 RANCOCAS**—mid-season; **11BB17 JERSEY**—late.

Blueberry Prices

Plant 2 or more for cross-pollination. Your choice of all varieties listed.

Well branched and blooming size. Height and Age.	Price Each	2 Plants	4 Plants	6 Plants	12 Plants
Good, 2 yr., 6 to 12 inches	1.00	1.59	2.85	3.75	6.90
Better, 2 yr., 18 inches	1.55	2.70	4.95	6.98	12.45
Best, 3 yr., 2 to 3 ft.	2.25	3.95	7.60	10.95	21.25

Acid Peat Moss for Blueberries

11PM18—Blueberries prefer acid soil with abundance of organic matter as rotten manure, peat, or compost. **SPRING HILL** offers and recommends Acid Peat Moss for Blueberries. Highest grade Horticulture Acid Peat. **\$1.00 per bag; 3 bags \$2.50.**

Springhill's 100th ANNIVERSARY Blue Ribbon FRUIT TREE SALE

Don't Overlook Our Wonderful FREE Offers Below



HARDY PLUMS

BURBANK (Plum)—12P1—Extra large and tender, juicy; sparkling red fruit early in season.
YELLOW EGG (Plum)—12P2—Largest yellow plum that grows. Famous for honey-sweet flavor.
IMPROVED SHROPSHIRE DAMSON (Plum)—12P5—Small, dark purple plums. Hi-yielding, disease resistant.

GIANT PRUNE (Plum)—12P3—Big, blue freestone; sweet, mellow, yellow flesh. Prolific bearer.
STANLEY PRUNE (Plum)—12P4—Rated most hardy blue plum. Sweet, firm, yellow flesh; high yielding.

PLUM TREE PRICES—Choice of above 5 varieties of plum trees. Highest U. S. Standard grades.

Description see above Age & Size	Price Each	Price of 3 trees	Price of 10 trees	Price of 25 trees
GOOD, 2 yr., 3 to 4 ft.	\$1.39	\$3.85	\$11.95	\$27.50
BEST, 3 & 4 yr., giant, 5 to 7 ft.	2.45	6.95	22.50	



A 5-N-1 APPLE
5 kinds grafted on one tree. See Page 10



DELICIOUS HARDY PEACHES LISTED IN ORDER OF RIPENING

GOLDEN JUBILEE—12P6—High yielding, early yellow freestone peach of exceptional quality, color and flavor.
EARLY ELBERTA—12P7—Like Elberta but bears two weeks earlier. Delicious, large, golden-yellow freestone.
NEW HALE HAVEN—12P8—Hardy cross of J. H. Hale and South Haven with the best characteristics of each.
BELLE OF GEORGIA—12P9—The finest flavored peach of high quality. Superb, rich, creamy-white-red blushed.
J. H. HALE—12P10—Earlier than Elberta, superior size and flavor. Large, tender, yellow freestone.
ELBERTA—12P11—Juicy, golden-yellow freestone. The old reliable most popular money-making variety.
LATE ELBERTA—12P12—Fruit and trees are like Elberta. Good quality, very productive.

PEACH TREE PRICES—Choice of 7 varieties of peach trees. GUARANTEED U. S. Standard grades.

Description & Cat. No. above AGE AND SIZE	Price Each	Price of 3 trees	Price of 10 trees	Price of 25 trees
GOOD, 2 yr., 3 to 4 ft.	\$.98	\$2.65	\$7.75	\$18.75
BETTER, 2 yr., 4 to 5 ft.	1.45	4.10	12.50	28.75
BEST, 3 yr., 5 to 7 ft. plants	1.98	5.55	18.25	44.60

FREE PEACH TREE
Buy any 3 peaches, any one size and select any one peach tree the same size absolutely FREE. Save 33 1/3 on this 100th anniversary special. December 15, 1949.

SPRING HILL'S QUALITY PEARS LISTED IN ORDER OF RIPENING

MAXINE—12P14—Extra large, excellent quality. Blight resistant; sell at premium prices. Highly recommended.
DUCHESS—12P15—Largest, sweet and mellow mid-season pear, ripening early fall. Healthy trees, large yields.
BARTLETT—12P16—Universal popularity. Mild, sweet, delicious and attractive golden fruits with red blush.
KIEFFER—12P17—Best winter pear. Fine for canning and eating, if properly stored. Large crops each year.
SECKEL—12P18—The well known sugar pear prized for its flavor for eating, desserts and pickling.

PEAR TREE PRICES—Choice, 5 varieties of pear trees.

Description & Cat. No. see above AGE AND SIZE	Price Each	Price of 3 trees	Price of 10 trees	Price of 25 trees
GOOD, 2 yr., 3 to 4 ft.	\$1.45	\$4.10	\$12.50	\$28.75
BEST, 3 yr., 5 to 7 ft.	2.45	7.10	22.50	

FREE PEAR TREE
Buy any 3 pears, any one size and select any one pear tree the same size absolutely FREE. Save 33 1/3 on this 100th anniversary special. December 15, 1949.



SUPERIOR CHERRY TREES Sour for pies and preserves. Sweet for eating and salads.

EARLY RICHMOND (Sour)—12C1—Cherries for 1st cherry pies of the season which are so appetizing.
LARGE MONTMORENCY (Sour)—12C2—Most dependable, favorite cherry for home and commercial use.
ROYAL ANN (Sweet)—12C3—Golden cherry with blushed cheek. Leading and best yellow cherry.
BLACK TARTARIAN (Sweet)—12C4—Commands premium prices. Yields large, superb, sweet cherries.

CHERRY TREE PRICES—Choice of 4 varieties of cherry.

Description, Cat. No. see above Age and Size	Price Each	Price of 3 trees	Price of 10 trees	Price of 25 trees
GOOD, 2 yr., 3 to 4 ft.	\$1.65	\$4.65	\$14.50	\$33.75
BETTER, 2 yr., 4 to 5 ft.	2.15	6.15	19.50	46.25
BEST, 3 yr., 5 to 7 ft.	2.75	7.95	25.50	

ANOKA (A Noteworthy Apple) 12A15—Bears 1st or 2nd year. Nice red striped apples for cooking or eating. 2 yr. 3 to 4 ft., \$1.15 each; 3 for \$2.98. 3 for \$7.95 6 to 7 ft., \$2.75 each.

SURE CROP NECTARINE
(Called Fuzzless Peach)
12P19—The ideal fruit—as large as the leading commercial varieties of peach, with smooth, plum-like skin of bright red blushed with gold. An excellent yielder of superb fruit. Very hardy, having withstood a temperature of 25 degrees below zero. Many trees will bear 2nd year. 3 ft. size, \$1.49 each; 3 for \$4.20; 10 for \$13.35. 2 yr., 5 to 7 ft. giants, \$2.35 each; 3 for \$6.75.

NEW AND BETTER APPLES Listed in approximate order of ripening.

YELLOW TRANSPARENT—13A1—Very early. Dependable, high yielding golden variety.
EARLY LODI—13A2—Improved, large, hi-quality, golden apple. Splendid to cook or eat.
WEALTHY—13A3—Red-striped, summer apple. Heavy yielding, fine flavor. Cooking and eating.
GIANT RAMBO—13A4—Great big red-striped apples in abundance. Highly prized for good flavor.
DOLGA CRAB—13A5—Hi-yielding scarlet fruit. Excellent for jams, good as pollinator.
McINTOSH—13A6—Follows Wealthy. Bright, red tangy apple. Unsurpassed to cook and eat.
JONATHAN—13A7—High quality, bright red apples to cook or eat. Dependable and hi-yielding.
GRIMES GOLDEN—13A8—Big, fall ripening. Favorite for cooking and eating. Bears young.
DBL. RED DELICIOUS—13A9—Famous for color, mellowness, flavor and big crops quick.
YELLOW DELICIOUS—13A10—Shape, size and quality of red delicious, bears young and good.
STAYMEN WINESAP—13A11—Famous for size, quality, productiveness; cooking and eating.
RED BALDWIN—13A12—Rich red apples that keep into winter. Trees bear young and big crops.
DBL. RED WINESAP—13A13—Dbl., red strain similar shape, size, flavor, yields, etc., to Staymen.
RED ROME BEAUTY—13A14—Late keeping, hi-yielding, big bright red apples. Very dependable.

FREE TREES SEE BELOW

APPLE TREE PRICES—All varieties of apple trees alike or assorted.

Description & Cat. No. see above AGE & SIZE	Price Each	Price of 3 trees	Price of 10 trees	Price of 25 trees
GOOD, 2 yr., 3 to 4 ft.	\$.98	\$2.65	\$7.75	\$18.75
BETTER, 2 yr., 4 to 6 ft.	1.79	4.98	15.90	38.50
BEST, 3 yr., 6 to 7 ft.	2.45	6.95	22.50	53.75

FREE APPLE TREE
Buy any 3 apple, any one size and select any one apple tree the same size absolutely FREE. Save 33 1/3 on this 100th anniversary special. December 15, 1949.

DWARF PEAR TREES
Big BARTLETT PEARS on Dwarf Trees—13P17—Full size fruit on miniature trees. Bears 1st or 2nd year, special dwarfing root stock makes trees blight resistant. New reduced prices, big, 3 yr. size, 3 to 4 ft. tall.
\$2.95 each
3 for \$8.50

Dwarf Early Bearing NANKING CHERRIES
13C16—Medium size, sweet, red cherries, excellent for cooking and eating. Beautiful dwarf trees. 4 to 5 ft. tall, bearing age 2nd year.
Fall
Sale Price **\$1.00**
3 for \$4.15
EACH

DWARF PLUM
(Prunus Martima)
13C15—Grows 8 to 9 ft. tall. Beautiful in bloom. Crimson-purple plums fine for jams and eating. Bearing age 3 ft. plants \$1.25 each; 3 for \$3.45.
Fall
Sale Price **\$10.95**
10 for

SPRING HILL'S High Yielding APRICOTS QUICK BEARING
HUNGARAN HYBRID APRICOTS—13A18—Beautiful dwarf trees, excellent fruit. Plant two or more trees for cross pollination. 1 yr., 1 1/2 ft., 2 for \$1.25; 6 for \$3.30; 12 for \$5.95. 2 yr., 3 ft. size, \$1.15 each; 3 for \$3.15. 6 for \$4.75.
MOORPARK APRICOT—13A19—Extra large, hardy and one of the finest apricots. Rich, juicy and sweet.
SUPERB APRICOT—13A20—Extra hardy. Medium large fruit, firm and highly colored.
Prices for Moorpark and Superb Apricots
2 yr., 3 to 4 ft. \$1.35 each 2 for \$2.50 10 for \$11.95
3 yr., 5 to 7 ft. 2.45 each 2 for 4.65 10 for 22.50

Exhibition CHRYSANTHEMUMS

CHOICE
LARGE
HARDY

SPRING HILL'S SURPRISE COLOR COLLECTION

Spring Hill Nurseries has one of the largest plantings and most extensive variety collections of hardy chrysanthemums in America. All the following chrysanthemums guaranteed, new early, hardy, giant, cut flower, exhibition varieties, Plant now for big blooms in your garden this year.

BIG, FIELD GROWN PLANTS YOUR CHOICE OF COLORS

- Exhibition flowering Red, 14C1
- Exhibition flowering White, 14C2
- Exhibition flowering Yellow, 14C3
- Exhibition flowering Bronze, 14C4
- Exhibition flowering Pink, 14C5

30c each
5 for
\$1.15

Choice of above 5 exhibition Chrysanthemums 30c each; 5 for \$1.15.



Dear Sirs:
Plants bought from you were wonderful and I will want more in the spring.

W. H. Duffy



Dear Sirs:
Received my nursery order and am very much pleased in the nice condition of the plants. The chrysanthemums are nice strong plants.

Mrs. John D. Bowers
Miami 34, Florida

Best New English CHRYSANTHEMUMS

COPPELIA 14C6—Big, Indian-red, color of ripe tomatoes. One of the best. 50c each; 3 for \$1.35.

MRS. T. RILEY 14C7—Hardy, early blooming, giant, incurved white blooms often 5 inches across. 55c each; 3 for \$1.50.

TRIXIE 14C8—Big, glowing, soft pink with salmon center. Free flowering, strong grower. 50c each; 3 for \$1.35.

GOLD STANDARD 14C9—Big, bright yellow flowers. Long stems for bouquets. 55c each; 3 for \$1.50.

EGYPT 14C10—Large, deep bronze with amber-crimson and gold, superbly blended. 50c each; 3 for \$1.35.

LESTER FELTON 14C11—Very striking, big purple that softens to lavender. 55c each; 3 for \$1.50.

ENGLISH MUM SPECIAL 14C12—One each Red, White, Pink, Yellow, Bronze, Purple. Spring Hill's choice of the best, giant flowering, double varieties. Regular \$3.30 value; no broken collections. **ALL SIX FOR \$2.39**



WONDERFUL
NEW HARDY

EXHIBITION MUMS

MISS LACE (Soft Lavender)—14C15—Tall, excellent for cutting; same size flower and color of Lavender Lady. Field clump, 60c each; 3 for \$1.50.

CHAS. NYE (Bright Yellow)—14C16—Our biggest and best large golden-yellow. Highly recommended. Field clump, 65c each; 3 for \$1.65.

NATIONAL VELVET (Bright Crimson)—14C17—Profusion of brilliant, big, double crimson blooms. Field clump, 60c each; 3 for \$1.50.

WHITE EARLY WONDER (Lovely White)—14C18—Big, double, white blooms in profusion. Recommended. 50c each; 3 for \$1.25.

MAGNOLIA (Salmon-pink)—14C19—Large, double salmon-pink. Beautiful blend of colors. 55c each; 3 for \$1.35.

CHIPPEWA (Mallow Purple)—14C20—Large, double blooms, striking purple. Profuse blooming, reliable. 55c each; 3 for \$1.35.

SEPTEMBER SHELL (Apple Blossom Pink)—14C21—Lovely soft pink. Exquisite color tones. Very popular. 55c each; 3 for \$1.35.



Amazing New Free Bloom- ing Dwarf Mound Shaped Plants **CUSHION MUMS**

Our supply of hardy cushion mums is so limited we can only offer them in colors this fall. Spring Hill guarantees only the best early blooming, free flowering varieties that grow into dwarf, mound shaped plants without pinching. Choice of the following colors:

RED—15C1
YELLOW—15C2

WHITE—15C3
BRONZE—15C4
PINK—15C5

Field clumps, 55c each; 3 for \$1.35.



CUSHION MUM SPECIAL
COLLECTION No. 15C6 1 each 5 colors listed. **5 for \$1.98**

World's Finest
New Hardy

BUTTON MUMS



15C7—Compact, perfect, double button-like flowers in great profusion unsurpassed for cutting and garden beauty. Guaranteed America's finest varieties for hardiness, healthiness and profusion of perfect blooms. Choice of Red, Bronze, Pink, Yellow and White. Big, field grown clumps, 3 for \$1.25; 10 for \$3.95.

50c EACH

Our Best
New Giant

SINGLE MUMS

15C8—Spring Hill unhesitatingly recommends all varieties offered. No other type of hardy chrysanthemums is more colorful, more beautiful or more profuse blooming. Unsurpassed for long lasting and beautiful bouquets. Choice of red, bronze, pink, white and yellow. Big, field grown clumps. 3 for \$1.19; 10 for \$3.75.

45c EACH



INDIVIDUAL SELECTION OF BEST PLANTS FROM FIELDS ADD 25% TO PRICES ON PAGES 14 AND 15.

8 WONDERFUL VARIETIES OF HARDY PHLOX



PHLOX DAILY SKETCH

CHAS. CURTIS (Orange-scarlet) 15P9—Vigorous and free flowering, striking, sunset red. Finest of its color. Big, No. 1 plants, 38c each; 3 for \$1.00.

MARY LOUISE (Finest White) 15P10—Unusually large; prolific grower and bloomer. Very outstanding. Big, No. 1 plants, 38c each; 3 for \$1.00.

CAROLINE VANDENBURG (Lavender-blue) 15P11—Extra large individual flowers. Best of blue shades. Recommended. Big, No. 1 plants, 36c each; 3 for 95c.

DAILY SKETCH (Salmon-pink) 15P12—Robust and healthy. Large, salmon-pink with crimson eye. Big, No. 1 plants, 35c each; 3 for 89c.

JULY LIGHTS (Cherry-red) 15P13—Brilliant colors, fine big blooms in profusion. Glistens like rubies. Big, No. 1 plants, 36c each; 3 for 95c.

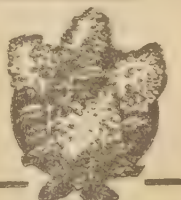
PRIME MINISTER (White, Red Eye) 15P14—Extra large blooms of snow white with vivid crimson eye. Beautiful. Big, No. 1 plants, 35c each; 3 for 89c.

SALMON GLOW (Salmon-orange) 15P15—Rich salmon orange, beautiful harmonizing colors. Strong grower. Big, No. 1 plants, 36c each; 3 for 95c.

LEO SCHLAGETTER (Fiery-scarlet) 15P16—Most brilliant of all phlox. Rated best red phlox in existence. Big, No. 1 plants, 38c each; 3 for \$1.00.

SURPRISE PHLOX SPECIAL

15P17—Guaranteed, new, large flowering varieties. Big savings for those who want abundance of blooms and care little for names. Choice Red; Pink; White; and Lavender. **Big, No. 1 plants, 3 for 79c; 6 for \$1.35; 12 for \$2.40.**



Dear Sirs:

My bulbs arrived today in excellent condition. They are nice, healthy looking bulbs and I am very much pleased with them.

Mrs. E. M. Lane Saco, Maine

Spring Hill **NURSERIES**
EST. 1849

GUARANTEED PLANTS *Buy With Confidence*

Dear Sirs:

We were well pleased with our last order. It came in excellent condition, thank you very much.

Julius Greve
PAGE FIFTEEN

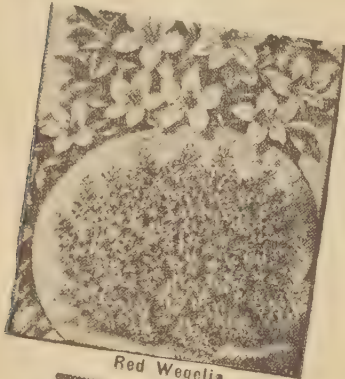
SPRING HILL'S HARDY SHRUBS

Beautiful Blooms and
Berries - Colorful
Foliage and
Branches

See
Shade Trees
1c Sale
Page 7



Sweet Shrub



Red Wegelia



Golden Bell Forsythia



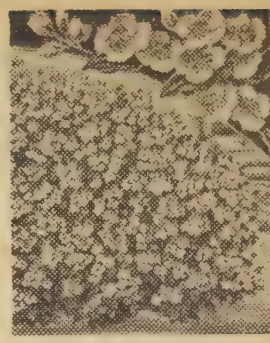
Father Hugo Rose



Everblooming
Double Mock Orange



Red Leaf Barberry



Fire Bush



Giant Pussy Willow



Everblooming Dwarf Red Spirea A. W.



Hydrangea P. G.



Old Fashion Lilac

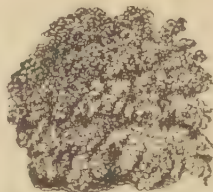
- **EVERBLOOMING DOUBLE MOCK ORANGE (Philadelphus Virginal) 1651** EACH 80c
Beautiful, semi-double, snow-white blooms all season. 3 ft. blooming size, 3 for \$2.10
- **BARBERRY RED LEAF (Thunbergi Atropurpurea) 1652** EACH 70c
Bright red foliage all season; red berries in fall. 3 yr., 2 ft. size, 3 for \$1.75
- **FIREBUSH (Cydonia) 1653** EACH 75c
Fiery-orange-red blooms each spring. Free flowering, semi-dwarf. 3 yr., 2 ft. size, 3 for \$1.75
- **GIANT PUSSY WILLOW (Salix Caprice) 1654** EACH 70c
Extra large, silvery-pink catkins. Fine for bouquets. 3 ft. size, 3 for \$1.75
- **EVERBLOOMING DWARF PINK SPIREA A. W. 1655** EACH 75c
Dwarf, compact plants; continuous rose-red blooms. 3 yr. blooming size, 3 for \$1.90
- **HYDRANGEA PEE GEE (Giant Pink Hydrangea) 1656** EACH 85c
Massive snow-white blooms change to rose-pink color. 3 yr. blooming size, 3 for \$2.25
- **OLD FASHION LILAC (Syringa Vulgaris) 1657** EACH 75c
Famous for profusion of fragrant lavender blooms. 3 ft. size, 3 for \$1.90
- **SWEET SHRUB (Calycanthus) 1658** EACH 60c
Delightfully spicily fragrant chocolate red blooms; attractive plants. 3 yr., 2 ft., 3 for \$1.50
- **EVERBLOOMING RED WEGELIA (Eva Rathke) 1659** EACH 80c
Deep cardinal red flowers continuously all summer. Blooming size, 3 ft., 3 for \$2.10
- **GIANT GOLDEN BELL (Forsythia Spectabilis) 3 16510** EACH 70c
Improved, upright growing; big flowers of intense yellow. 4 ft. blooming size, 3 for \$1.75
- **FATHER HUGO'S ROSE (Rose Hugonis) 16511** EACH 90c
Hardy shrub-like plants grow 4 ft. tall. (Golden Rose of China) 3 ft. blooming size, 3 for \$2.40

- **SPIREA VAN HOUTTEI (Bridal Wreath) 16512** EACH 60c
Mass of white when in full bloom, most popular of all hardy shrubs. 3 yr., 3 ft. blooming size, 3 for \$1.50
(Hedging size see picture and prices opposite page) 12 for \$5.40

- **WHITE SNOWBERRY (Symphoricarpos Racemosus) 16513** EACH 85c
Excellent for shade; beautiful pink blooms and white berries. 3 yr., 2 ft., 3 for \$1.90
- **FEATHER SPIREA (Thunbergi) 16514** EACH 70c
Semi-dwarf attractive feathery foliage; profusion of white flowers. 3 yr. blooming size
- **HILL'S OF SNOW (Hydrangea A. G.) 16515** EACH 85c
Called snowball hydrangea. Abundance of big, snow-white blooms. 3 yr. blooming size, 3 for \$2.25
- **LILAC PERSIAN (Dwarf Lilac) 16516** EACH 80c
Long blooming season; pinkish-red buds open vivid lilac. 3 yr. blooming size, 3 for \$2.10
- **RED BUSH HONEYSUCKLE (Lonicera Zabeli) 16517** EACH 85c
Tall, vigorous, hardy shrub. Grows in sun or shade. Striking red flowers and fruits. 4 ft. size, 3 for \$2.25

BEAUTY BUSH

(Kolkwitzia Amabilis) 16518



Covered with thousands of lovely pink blooms that last for a long time. 3 yr., 3 ft. blooming size

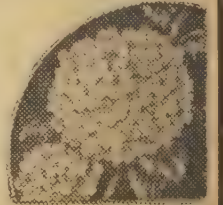
80c each
3 for \$2.10

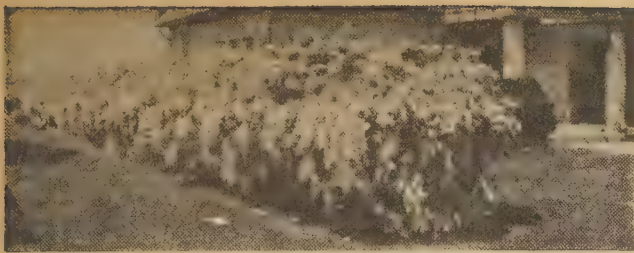
OLD FASHION SNOWBALL

(Viburnum Opulus Sterilis) 16519

Big, snow-white, round blooms. Excellent for bouquets. Beautiful, tall growing plants. 3 yr., 3 ft. blooming size,

85c each
3 for \$2.25





Spirea Van Houttei Hedge in Bloom



Crimson Fl. Peach



Hardy Amur River North Privet



Trimmed Ibolium Privet

**SPRING HILL'S
SHADE TREES
AND
HEDGES**

For Specimen Planting
and Living Fences
Outstanding Beauty
at Low Cost

FLOWERING AND ORNAMENTAL SHADE TREES

Crimson Flowering Peach 17T1
Brilliant, double red blooms on dwarf, compact trees. Most gorgeous of all flowering trees. 2 yr., 4 to 5 ft. blooming size, \$1.55 each; 3 for \$4.40.

Dwarf Red Leaf Bush Cherry 17T2—(Prunus Cistena) Striking red foliage from spring till leaves shed. Easy to grow, highly recommended. 3 yr., bushy 2 ft. plants \$1.25 each; 3 for \$3.45.

Crimson Flowering Crab 17T3—(Malus Eleyll) Greatest profusion of rose-red blooms cover trees in spring. Attractive foliage and bright red fruits. 3 yr., blooming size, 5 to 7 ft., \$1.95 each.

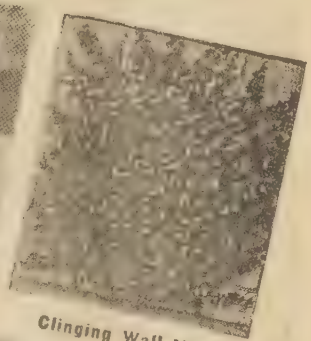
Silver Maple 17T4—Fastest growing maple. Beautiful autumn foliage of red and gold. Most satisfactory for quick shade. 8 ft. branched trees, \$1.95 each; 2 for \$3.60. (Smaller sizes see 1¢ sale on page 7)

Norway Maple 17T5—Compact growing with big, glossy foliage. One of our most beautiful trees. 8 to 10 ft., \$3.95 each; 2 for \$7.50.

Weeping Willow 17T6—One of our fastest growing shade trees. Good weeping strain. 6 to 8 ft. size, \$2.45 each; 2 for \$4.40. (Smaller size see 1¢ sale page 7.)



Purple Wisteria



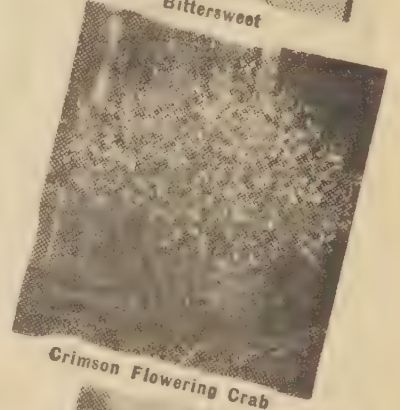
Clinging Wall Vine



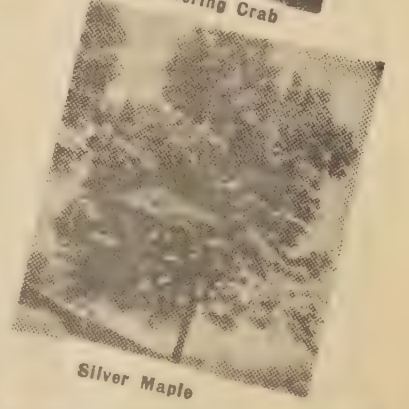
Fragrant Honeysuckle Vine



Bittersweet



Crimson Flowering Crab



Silver Maple

SPRING HILL'S HARDY ORNAMENTAL VINES

BITTERSWEET CELASTRUS 17V7—Berries fine for decorating. Vigorous growing and perfectly hardy. 2 yr. fruiting age, 70¢ each; 3 for \$1.75.

FRAGRANT HONEYSUCKLE VINE 17V8
Evergreen leaves stay green on vines all winter. Fragrant creamy-white flowers. 2 yr., 50¢ each; 3 for \$1.20. (Low quantity prices for erosion control.)

CLINGING WALL VINE (Euonymus Colorata) 17V9—Climbs brick or concrete walls without support. Hardy, fast growing; leaves stay green on vines all winter. 2 yr., 65¢ each; 3 for \$1.65.

PURPLE WISTERIA 17V10—Grafted plants guaranteed to bloom. The big clusters of lavender blooms are magnificent. 3 yr., \$1.25 each; 3 for \$3.45.

Best Hardy HEDGES PLANT LIVING FENCES for ECONOMY and BEAUTY

NEW IBOLIUM PRIVET

(Most Beautiful, Hardy Privet)—17H11—Ibolium has the glossy foliage of California, with hardiness of Amur River.
1½ ft. 10 for \$2.75, 25 for \$5.50, 100 for \$18.00
3 ft. 10 for \$3.95, 25 for \$9.00, 100 for \$33.00

AMUR RIVER NORTH PRIVET

(The Hardest Privet Hedge)—17H12—One of the hardest hedge plants. Upright growth and makes a compact hedge. 1 ft. size, see 1c sale page 7.
1½ ft. 10 for \$2.25, 25 for \$3.75, 100 for \$11.95
3 ft. 10 for \$2.95, 25 for \$6.75, 100 for \$24.50

SPIREA VAN HOUTTEI

(Bridal Wreath)—17H13—World's most universal flowering shrub. Plants are a mass of white in bloom. Easy to grow, does well in sun or shade.
2 yr. 10 for \$1.95, 25 for \$ 3.25, 100 for \$12.50
3 yr. 10 for \$5.50, 25 for \$12.50, 100 for \$48.00

BARBERRY GREEN LEAF

(Thunbergi)—17H14—Protective berried hedge. Lovely autumn coloring fruits all winter. Succeeds well in all soils and climates.
12-15" 10 for \$2.50, 25 for \$4.75, 100 for \$17.00
1½ ft. 10 for \$3.25, 25 for \$6.50, 100 for \$24.00

SPRING HILL'S BIG HARDY OHIO FIELD GROWN ROSES (NONE BETTER)



MONTHLY BLOOMING ROSE GARDEN SPECIAL

Send for this wonderful collection. Accepted nationally as the cream of recent introductions. All reliable growers, profuse blooming with gorgeous colors and delightful fragrance.

- **AMI QUINARD** 18R1—Deep velvety crimson. Named the black rose. (Prices see below.)
- **ETOILE DE HOLLAND** 18R2—Best all around scarlet-crimson red rose. (Prices see below.)
- **GOLDEN DAWN** 18R3—Beautiful, large, brilliant, golden blooms; recommended. (Prices see below.)
- **K. A. VICTORIA** 18R4—Magnificent white, unsurpassed for beauty and reliability. (Prices see below.)
- **PINK DAWN** 18R5—Lovely, big, bright, rose-pink blooms in profusion. (Prices see below.)
- **TALISMAN** 18R6—Beautiful blend of copper, gold, red and salmon. (Prices see below.)

GOOD Ohio grown, 2 yr., No. 2 size, guaranteed to bloom next spring, summer and fall.

79c each; 3 for \$2.15
One each as pictured and listed.

6 for \$3.60

BEST Ohio grown, 2 yr. No. 1 extra select, guaranteed to bloom next spring, summer and fall.

\$1.15 each; 3 for \$3.20
One each as pictured and listed.

6 for \$5.75

Fall planting instructions included with each order.

WONDERFUL ALL STATE EVERBLOOMING HYBRID TEA ROSES

CHRISTOPHER STONE 18R7—New mammoth, double scarlet blooms in abundance all season.

CONDESA DE SASTAGO 18R8—Beautiful yellow, orange and red blooms. Multicolor.

GRENOBLE 18R10—New and one of the best. Big, bright scarlet crimson, extra double blooms.

MCGREDDY'S IVORY 18R11—Lovely, big, double pure cream-white blooms. Strong, healthy plants.

DUQUESNE DE PENERANDA 18R12—Extra large, extra double glowing apricot-orange. One of the best of its color.

We recommend fall planting of roses. Roses planted this fall will flower earlier and more abundantly. Continuous blooms from May to winter. All roses offered are big, Northern Ohio, field grown. (None Better).

PRICES OF ALL STATE EVERBLOOMING HYBRID TEA ROSES

Ohio grown, 2 yr. No. 2 guaranteed to bloom next spring, summer and fall. 89c each; 3 for \$2.50; 12 for \$8.95.

Ohio Grown, 2 yr. No. 1 extra select. Guaranteed to bloom next summer, spring and fall. \$1.25 each; 3 for \$3.50. 12 for \$12.60.

MME. C. CHAMBARD 18R14—Striking, bright rose-pink. Free flowering, excellent for cutting.

MME. JOSEPH PERRAND 18R15—Large, double, fragrant, yellow deeply tinted with copper.

SIR HENRY SEAGRAVE 18R17—Has long pointed bright primrose yellow buds; open very large, double, creamy-white.

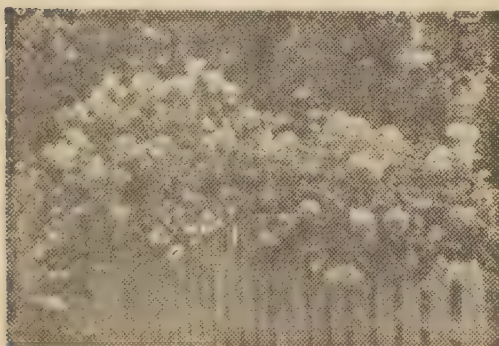
SUNBURST 18R18—A favorite, large, double, orange-yellow blooms; very beautiful.

MRS. W. C. MILLER 18R19—Big, clear, rich pink blooms. Outstanding for beauty and performance.

Everblooming Climbing Rose NEW DAWN

18CR18—(Plant Patent No. 1) Everblooming with double, fragrant cameo-pink blooms on long, strong stems. Vigorous, hardy and healthy. One of the best everblooming climbers. 2 yr. No. 1, \$1.25 each; 3 for \$3.45.

3 for \$3.45



SPRING HILL'S BIG HARDY, OHIO FIELD GROWN CLIMBING ROSES

Abundance of blooms, excellent for bouquets and garden display.

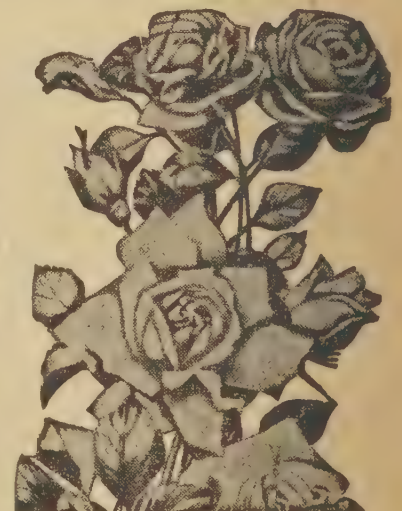
CL. AMERICAN BEAUTY 18CR19—Large, full cupped blooms with very fragrant crimson-carmine flowers in profusion on long stems. Sometimes recurrent blooms.

CL. DR. HUEY 18CR20—Crimson-maroon blooms 2 inches across with beautiful yellow centers. Rich, green foliage, strong grower, hardy. Blooms for three weeks in June.

CL. MARY WALLACE 18CR21—Long pointed, warm rose-pink buds open very large, fragrant blooms. Vigorous, healthy grower.

CL. SILVER MOON 18CR22—Lovely long pointed cream buds open large 4 1/2 inch semi-double white flowers with yellow centers. Vigorous grower, hardy and healthy.

CL. PAUL'S SCARLET 18CR23—Favorite, large flowering scarlet-red rose. The parent of BLAZE and winner of Gold Medal as the best climbing rose at the National Society's Exhibition. Striking scarlet color. Large, solitary flowers like Climbing American Beauty. Blooms over long period.



CLIMBING ROSE PRICES FOR ABOVE 5 VARIETIES

Choice of above 5 climbing roses, alike or assorted. Ohio field grown. 3 yr. giants, \$1.15 each; 3 for \$3.25; 6 for \$6.30. 2 yr. No. 1 1/2, 89c each; 3 for \$2.45; 6 for \$4.85.



EVERBLOOMING FLORIBUNDA AND POLYANTHA ROSES

Continuously in flower from spring to fall. Ideal planted in borders and hedges. Polyantha grows more dwarf, the blooms are smaller and more double and borne in large clusters.

Tall Floribunda Roses

BABY CHATEAU 19R1—Big, double, crimson blooms. Vigorous.

ELSE POULSEN 19R2—Bright rose-pink, profuse blooming.

IMPROVED LAFAYETTE 19R3—Vivid glowing crimson. Recommended.

ORANGE TRIUMPH 19R4—Salmon-coral with orange shadings. Excellent.

Low Polyantha Roses

BRILLIANT ECHO 19R5—Brilliant pink blooms in profusion.

GOLDEN SALMON 19R6—Huge flower clusters of pure orange.

IDEAL 19R7—Fragrant dark velvety crimson

TRIUMPH DE ORLEANS 19R8—Big, semi-double cherry red.

PRICES FOR ABOVE 8 VARIETIES OF FLORIBUNDA AND POLYANTHA ROSES select Ohio field grown. 2 yr. No. 1, \$1.10 each; 3 for \$2.89; 6 for \$5.55; 12 for \$10.80. 2 yr., No. 1/2, 79c each; 3 for \$2.15; 6 for \$3.75; 12 for \$7.90. (Write for special large quantity hedge prices).



ROSE FENCE

(*Rosa Multiflora*)—19R9—A practical living farm fence. *Rosa Multiflora* is recognized by U. S. Soil Conservation Service as a practical farm fence. Present recommendations are to plant 1 ft. apart in a single row. Note above picture. For full information write Soil Conservation Service, Elsberry, Missouri. The plants are hardy and well adapted to most all soils and climates. Fine for game protection and the attractive plants are filled each fall with beautiful seed pods that are fine for game food. The general use of *Rosa Multiflora* is just beginning but records prove its value for conservation and an inexpensive farm fence that will last generations. Notice: *Multiflora* Rose orders dug and shipped after October 15th.

Big demand. We suggest early orders.

6-12 inch	12-18 inch
10 for \$.95	10 for \$ 1.75
25 for 1.95	25 for 2.75
100 for 6.95	100 for 9.95
1000 for 50.00	1000 for 75.00

SPRINGHILL NURSERIES, TIPP CITY, OHIO

SAVE NEW REDUCED PEONY PRICES

PRIMEVERE (Yellow)—19P10—Big, Mother of Pearl collar, golden-yellow center; outstanding. \$1.35 each; 3 for \$3.75.

KARL ROSENFELD (Crimson)—19P11—Big, double, rich velvety crimson. Excellent bloomer. 85¢ each; 3 for \$2.25.

INSPECTOR LAVERGNE (Red)—19P12—A great big, double, scarlet-crimson peony. Early blooming. \$1.25 each; 3 for \$3.45.

FESTIVA MAXIMA (White)—19P13—Most reliable and beautiful, big, double white. Unsurpassed. 85¢ each; 3 for \$2.25.

BARONESS SCHROEDER (White)—19P14—Delicate shell-pink buds open into huge, double, white blooms. Recommended. \$1.15 each; 3 for \$2.95.

LADY ALEXANDER DUFF (Shell Pink)—19P15—Palest pink, free flowering, nicely formed, large, double blooms. 90¢ each; 3 for \$2.40.

MISS ECKHART (Rose-pink)—19P16—Beautiful, clear, bright, rose-pink. Excellent for garden and bouquets. 95¢ each; 3 for \$2.55.

SARAH BERNHARDT (Apple Blossom Pink)—19P17—Immense, free blooming pink of perfect form. Ideal pink cut flower peony. 95¢ each; 3 for \$2.55.

SOLANGE (Salmon-buff)—19P18—Like color of coffee with cream. Immense blooms unusual, beautiful, novelty peony. \$1.35 each; 3 for \$3.75.

MIKADO (Red and Gold)—19P19—Brilliant red petals surrounding a big center dome of golden stamens. \$1.25 each; 3 for \$3.45.

EVA (Lilac-red and Gold)—19P20—Large, round cupped lilac, crimson petals, gold center. Wonderful landscape variety, abundance of blooms. \$1.35 each; 3 for \$3.75.



BLACKEST PEONY GROWN

MONSIEUR MARTIN CAHAZAC

19P21—Striking, big flowers of deep, rich crimson-maroon. Almost black with glowing velvet-like color tones of crimson. Considered the most satisfactory variety of its color by peony fanciers, and prominent growers. Large, double flowers on strong stems. Drastically reduced prices, \$1.50 each; 3 for \$4.25.

3 for \$4.25

SAVE! ORDER PEONIES BY COLOR! 19P22 — Guaranteed to be early-blooming, large, double varieties. Thrifty, young, 3 to 5 eye roots. Your choice of red, white or pink. Selected from prize winning varieties. A certified \$2.55 value — save 20%. 75c each; 3 for \$1.95.



SPRING HILL'S HARDY GARDEN PERENNIALS

Grown Each Year
Without Replanting



DBL. HOLLYHOCK



FOXGLOVE



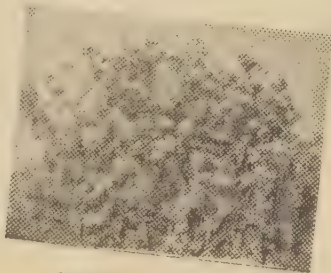
DELPHINIUM



BASKETS OF GOLD



ROSY SPIRES



HARDY AGERATUM



SILVER KING



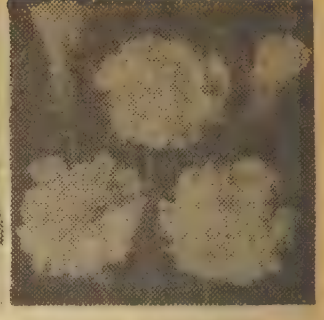
HARDY MARGUERITE



YUCCA



BLEEDING HEART



FLAME CARNATION



PAINTED DAISES



HARDY PANSIES



PLATYCODON

- PAINTED DAISES (Pyrethrum) 20P1**.....EACH 29c
Robinson Giants; beautiful deep pink and bright red colors.....2 yr., 3 for 75¢; 6 for \$1.35
- YUCCA (Spanish Dager or Thread Palm) 20P2**.....EACH 35c
Tall, branched spikes of creamy-white, flowers.....2 yr., 3 for 90¢; 6 for \$1.69
- HARDY PANSIES (Viola Cornuta) 20P3**.....EACH 24c
Grows each year without replanting; splendid mixture.....3 for 85¢; 10 for \$1.65
- BLEEDING HEART (Old Fashion) 20P4**.....EACH 69c
(Spectabills) Grows 2 ft. tall with largest blooms in profusion 2 yr., 3 for \$1.95; 6 for \$3.75
- BLEEDING HEART (Everblooming Plumy) 20P5**.....EACH 48c
(Exima) Dwarf, continuous flowering with fern-like foliage.....3 for \$1.30
- BELL FLOWER (Blue Platycodon) 20P6**.....EACH 28c
Big, bell-like buds open into perfect wax-like stars.....3 for 89¢; 10 for \$1.95
- DOUBLE BELL FLOWER (Dbl. Blue Platycodon) 20P7**.....EACH 38c
Large, double blooms free blooming. Very beautiful.....3 for \$1.00
- FLAME CARNATION (Hardy Grenadin Improved) 20P8**.....EACH 28c
Blooms continuously all summer. Crimson to scarlet-red.....3 for 89¢; 6 for \$1.30



DELPHINIUM (English Hybrids) 20P9—(Blackmore and Langdon strain)
Delicate shades of blue, mauve and pink. Each 32¢
2 yr., 3 for 79¢

DELPHINIUM (Belladonna Improved) 20P10—Lovely sky-blue blooms in
greatest profusion. Famous for cutting. 3 for 69¢ Each 28¢

SUPERB HYBRID DELPHINIUM (Pacific Giants) 20P11—Giant flowering,
disease resistant hardy strain. Unsurpassed for massive size and beautiful colors. 3 for 89¢; 6 for \$1.65 Each 35¢

DELPHINIUM (Everblooming Dwarf) 20P12—(Blue Butterfly) Contin-
uous blooms, splendid for cutting. 3 for 60¢; 6 for \$1.10 Each 38¢

FOXGLOVE (Shirley's Giants) 20P13.....EACH 33c
Extra big blooms with beautifully spotted throats. Assorted colors.....3 for 85¢

DOUBLE HOLLYHOCKS (Jack-the-Bean-Stalk) 20P14.....EACH 24c
Beautiful, double and semi-double fringed flowers. Assorted colors. 3 for 55¢; 10 for \$1.85

BASKETS OF GOLD (Alyssum Saxatile) 20P15.....EACH 28c
Low, bushy plants smothered with gold blooms each spring.....3 for 69¢; 6 for \$1.25

HARDY AGERATUM (Eupatorium Coelestinum) 20P16.....EACH 25c
Misty flowers of chicory-blue on 2 ft. stems. Hardy, easily grown. 3 for 60¢; 6 for \$1.10

ROSY SPIRES (Physostegia Vivid) 20P17.....EACH 28c
Rosy-pink blooms on 2 to 3 ft. stems. Blooms early to late fall.....3 for 89¢; 6 for \$1.25

SILVER KING (Artemesia) 20P18.....EACH 28c
Ghost plant of indescribable beauty; sparkling silver foliage.....3 for 69¢

HARDY MARGUERITE (Anthemis) 20P19.....EACH 25c
Profusion of yellow daisies throughout the summer. Very hardy.....3 for 80¢

SHASTA DAISY MAY QUEEN 20P20

New Hybrid of Dutch Origin. Already selected as best, new, early May blooming cut flower daisy. True strain imported direct from Holland. Vigorous growing, large flowering, perfectly winter hardy plants. Clumps can be divided.

2 yr. 33¢ Each; 3 for 85¢



**FRAGRANT
HARDY**

VIOLETS



PRINCE OF WALES

21P1—Spring and fall blooming. Large, fragrant, purple. 2 yr., 55¢ each; 2 for 86¢.

ROSINA 21P2—Lovely, extremely fragrant, pink violet. 40¢ each; 3 for \$1.05.

DBL. RUSSIAN 21P3—Fragrant and hardy. Deep, double, violet flowers. Very scarce. 55¢ each; 2 for 98¢.

ROYAL ROBE 21P4—Deep violet-blue flowers. Has exquisite fragrance. 45¢ each; 3 for \$1.18.

**3 for
\$1.18**



CRIMSON KING CARNATION

21P5—(Hardy) The best, large flowering carnation ever introduced. Foliage dark olive-green; fragrant, crimson flowers. 2 yr. field plants 50¢ each; 3 for \$1.35.

3 for \$1.35

HARDY BABY'S BREATH

Pink Baby's Breath

(Oldhamiana) 21P6 Continuous, dainty-pink blooms from July to fall. Wonderful for bouquets. 33¢ each; 3 for 85¢.

dbl. Baby's Breath

(Floraplana) 21P7 Pure snow-white flower sprays throughout the summer. 40¢ each; 2 for 75¢; 6 for \$1.95.

DBL. PINK BABY'S BREATH

(Rosy Vell) 21P8—Dwarf, double, pink flowers. Big, pot plants, 50¢ each; 3 for \$1.35.



**3 FOR
\$1.35**

SAVE Beautiful Hardy Flowers

SAVE
at these New
LOW PRICES

**...GROW EACH
YEAR WITHOUT
REPLANTING**



BLACKBERRY LILY 21P9—Unique orange-gold lilies dotted scarlet and blackberry-like seeds, fine for winter bouquets. 2 yr.

27c each
3 for 65c



CANTERBURY BELLS 21P10—Unsurpassed for grace and beauty. Pink, white and blue cup and saucer-like flowers make lasting cut flowers. Big, 2 yr.,

28c each
3 for 69c
12 for \$2.50



IRIS KAEMPFERI 21P11—New, aristocratic giants often as large as dinner plates. It blooms last and longest of the iris family. Assorted colors. 2 yr. size,

38c each
3 for 99c
12 for \$3.75



GAILLARDIA THE DAZZLER 21P12—Profusion of large, bright blooms. Big, crimson and maroon centers bordered with copper and gold. Fine for cutting.

29c each
3 for 75c
6 for \$1.35



FAMOUS RUSSELL LUPINES 21P13—Amazing colors, extra large flower spikes in greatest profusion. Big, 2 yr. blooming size plants.

30c each
3 for 79c
10 for \$2.40



BLUE FRINGED DAISY (Erigeron) 21P4—Clusters of beautiful azure-blue flowers for several months each summer, fine for cutting. 2 yr. blooming size,

33c each
3 for 85c
6 for \$1.55



Imperial Hybrid

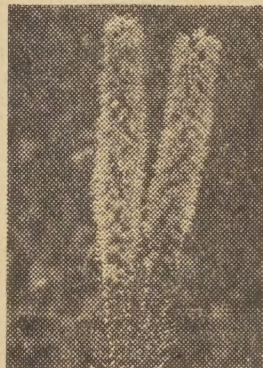
COLUMBINE 21P15—Beautiful, long spurs, amazing pastel colors. Large, tall, free flowering plants bloom from early to late spring. 2 yr.,

27c each
3 for 65c
6 for \$1.20



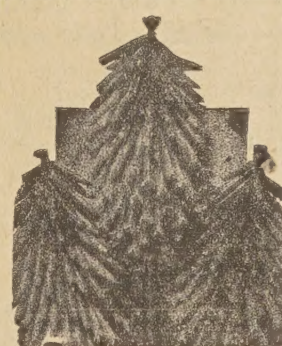
PINK SHASTA DAISY 21P16—(Clara Curtis) New, extra-hardy and vigorous daisy. Clear salmon-pink flowers from early August through September. Strong blooming size pot plants,

33c each
3 for 79c
12 for \$2.95



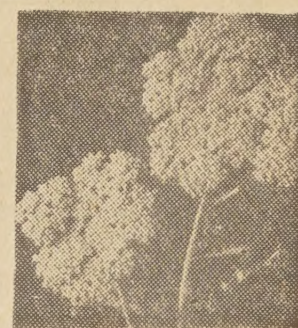
KANSAS GAY FEATHER 21P17—Big, long spikes completely covered with rosy-lavender blooms. Long lasting and expensive as cut flowers.

28c each
3 for 69c
10 for \$1.95



RED HOT POKER (Tritoma) 21P18—Sometimes called Torch flower, bright red or flame colored flowers on tall stems. Easily grown. 2 yr.,

37c each
3 for 95c



GIANT YELLOW YARROW (Achillea Fillipendula) 21P19—Big blooms of brilliant yellow, finely cut foliage. Dried blooms fine for winter decorations.

25c each
3 for 59c
6 for \$1.05
PAGE TWENTY-ONE.

**Make
Big Money**

GROW YOUR OWN EVERGREENS FOR HOME BEAUTIFICATION
Economical, Interesting and Easy — Small Sizes Grow Fast. Low, Medium and Tall Growing Varieties. A Thrifty Purchase.



**TAXUS (Yew)
SPREADING**

22E1—(Cuspidata) Spreads like Juniper Pfitseriana — low and broad. Best in shady locations. 4 yr., baby size, 8 to 10 inch, 50¢ each; 3 for \$1.25. Bushy, 6 yr., 12 to 15 inch spread, \$1.35 each; 2 for \$2.40. Heavy, 18 to 24 inch, \$6.50 each; matched pair, 2 for \$12.50.

3 for \$1.25



**SPINY GREEK
JUNIPER (Medium)**

22E2—(Stricta) Dwarf, compact, dense growing. Attractive silvery-blue foliage. 3 yr., \$5.50 each; matched pair, 2 \$2.20. Heavy, 18 to 24 inch, ft. tall, \$1.25 each; 2 for each; 3 for \$1.15. Bushy, 1 baby size, 4 to 6 inches, 45¢ for \$10.50.

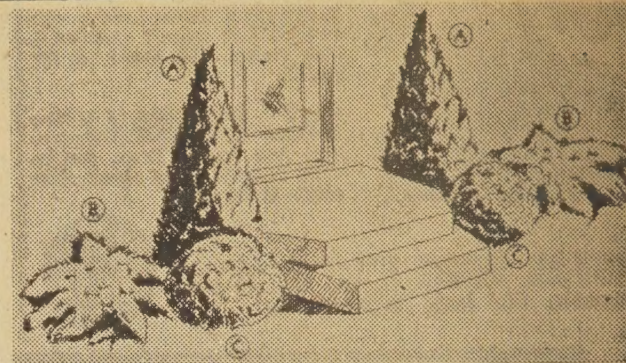
3 for \$1.15



IRISH JUNIPER

22E3—(New Fastigata) Upright, narrow, spire-like, semi-dwarf, fast growing. 3 yr., baby size, 5 to 7 inches, 45¢ each; 3 for \$1.15. Bushy, 1½ ft. tall, \$1.25 each; 2 for \$2.20. Heavy, 2 to 3 ft., \$4.50 each; matched pair, 2 for \$8.50.

3 for \$1.15



DOORSTEP ENTRANCE GROUP

- (A) PYRAMID ARBOR VITAE, 8 yr., 1½ ft. tall. Deep, rich green, tall, spire-like. Matched pair 2 for \$4.50.
 - (B) JUNIPER PFITSERIANA, 6 yr., 12 to 18 inches spread. Silvery-green, low, spreading. Matched pair, 2 for \$5.00.
 - (C) DWARF GOLDEN BIOTA, 6 yr., 12 to 15 inches tall. Golden foliage, low, globular. Matched pair, 2 for \$4.50.
- 2 each of above 3 choice, landscape evergreens, shipped individually wrapped in high grade peat. When planting, mix peat with earth; excellent plant food. Regular \$14.00 value.

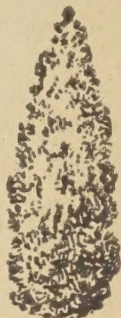
Collection 22E4 ALL 6 FOR \$8.98



BIOTA A. N.

22E5—Dwarf, golden, compact, oriental Arbor Vitae. Very beautiful. Baby size, 6 to 8 inch, 60¢ each; 3 for \$1.65. Bushy, 10 to 12 inch, \$1.35 each; 2 for \$2.40. Heavy, 18 to 24 inch, \$6.00 ea. Matched pair, 2 for \$11.50.

**3 for
\$1.65**



**COLORADO
BLUE SPRUCE**

22E6—Expensive and beautiful; a real bargain. Larger size, 1c sale page 7. 4 yr., 4 to 6 inches tall, 30¢ each; 5 for \$1.00. Heavy, 2 ft. size, \$7.50

**5
FOR
\$1.00**



**PYRAMID ARBOR
VITAE**

22E7—Tall, narrow, spire-like. 3 yr. transplanting size, 6 to 9 inches tall, 45¢ each; 3 for \$1.15. Heavy 5 yr. bushy, 12 to 15 inches tall, \$1.50 each; 2 for \$2.70. Heavy, 3 ft. size, \$6.00 ea.; matched pair, \$11.50.

**3
FOR
\$1.15**

TREMENDOUS SAVINGS 12 EVERGREENS AS PICTURED

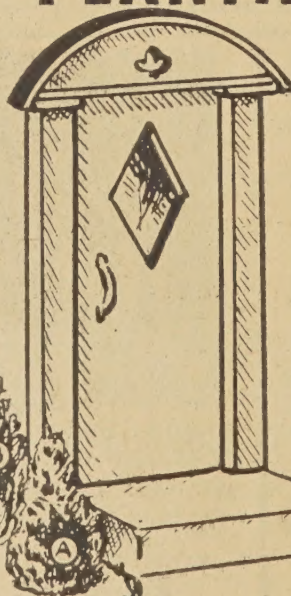
30ft. FRONT YARD PLANTING FOR \$39.95

Guaranteed big heavy plants as pictured. Variety Descriptions see above and opposite page.

- A. 2 Biota A. N. 15 18 in.
- B. 2 Irish Juniper 3 ft.
- C. 2 Globe Arbor Vitae 15 18 in.
- D. 2 Juniper Pfitseriana 15 18 in.
- E. 2 Spring Greek Juniper 15 18 in.
- F. 2 American Arbor Vitae 3 ft.

CERTIFIED \$52.00 CATALOG VALUE

**MONEY BACK
GUARANTEE**



**100th Anniversary
EVERGREEN SPECIAL**

Complete 1st class landscape Planting at far less than You would expect to pay

**12 HIGH CLASS
EVERGREENS as pictured
(Certified \$52.00 Catalog Value)**

All for \$39.95

DO YOUR OWN PLANTING . . AMAZING SAVINGS



**Special
25%
Discount**

DOORSTEP GROUP EVERGREENS

- 23E1 2 Pyramidalis Arbor Vitae, matched pair.
Heavy, 3 ft. tall.....\$11.50
2 Glove Arbor Vitae, matched pair
Heavy, 18 in. diameter..... 9.50

CERTIFIED CATALOG VALUE \$21.00

ALL FOR \$15.95



TAXUS HICKSI

23E2—Upright, tall, narrow yew. Excellent for shady locations. 3 yr. baby size, 8 to 10 inches, 50c each; 3 for \$1.25. Bushy, 12 to 15 inch, \$1.45 each; 2 for \$2.60. Heavy, 2 ft., \$6.50 each; matched pair, 2 for \$12.50.



NORWAY SPRUCE

23E3—Fast growing, excellent outdoor Christmas tree for lighting. Baby size, 6 to 9 inch, 35c each; 3 for 89c. Heavy, 2 ft. size, \$4.00 each; matched pair, 2 for \$7.50.



GLOBE ARBOR VITAE

23E4—(Woodwardi) Considered best, dwarf, compact, symmetrical, grows ball-shape without shearing. Baby size, 6 to 8 inch, 45c each; 3 for \$1.15. Bushy, 10 to 12 inch, \$1.15 each; 2 for \$2.00. Heavy, 2 ft. size, \$5.00 each; matched pair, 2 for \$9.50.

HOW TO PLANT EVERGREENS

Plant evergreens immediately upon arrival as they have resin in their sap. Keep from sun and air. Dig hole 8 to 10 inches larger than the ball of earth or root spread. Set evergreen 1 to 2 inches deeper than soil marks on the trunk of the evergreen. Fill hole half full of rich top soil, firm well, then fill hole with water.

PLANTING B&B EVERGREENS



BROADLEAF EVERGREENS

The following shrubs hold their foliage all winter.

EVERGREEN FIRETHORN

23E5—(Pyracantha Pauciflora) New, dwarf strain famous for its scarlet fruit and attractive foliage. Grows 4 feet tall, 3 yr. pot plants, 9 to 12 inches, 70c each; 3 for \$1.95.

EVERGREEN BITTERSWEET

23E6—(Euonymus Patens) Grows two to three feet tall. Very popular, dwarf, bushy evergreen shrubs. 9 to 12 inches, 65c each; 3 for \$1.75. Heavy, 12 to 15 inch, \$1.75 each; 3 for \$4.50.

HOLLY LEAF MAHONIA

23E7—Glistening green, holly-like foliage accented with reddish-bronze. Clusters of attractive blue grape-like fruits. Grows well in shade. 8 to 10 inch transplanting size, 75c each; 3 for \$1.95. Heavy, 15 to 18 inch, \$3.00 each; 2 for \$5.50.

23E5—(Pyracantha Pauciflora) New, dwarf strain famous for its scarlet fruit and attractive foliage. Grows 4 feet tall, 3 yr. pot plants, 9 to 12 inches, 70c each; 3 for \$1.95.

23E6—(Euonymus Patens) Grows two to three feet tall. Very popular, dwarf, bushy evergreen shrubs. 9 to 12 inches, 65c each; 3 for \$1.75. Heavy, 12 to 15 inch, \$1.75 each; 3 for \$4.50.

23E7—Glistening green, holly-like foliage accented with reddish-bronze. Clusters of attractive blue grape-like fruits. Grows well in shade. 8 to 10 inch transplanting size, 75c each; 3 for \$1.95. Heavy, 15 to 18 inch, \$3.00 each; 2 for \$5.50.



AMERICAN ARBOR VITAE

23E8—Tall, broad, a fast growing popular landscape evergreen. Baby size, 6 to 8 inch, 35c each; 3 for 89c. 12 to 15 inch, \$1.00 each; 2 for \$1.70. Heavy, 3 ft., \$4.50 each; matched pair, 2 for \$8.50.



CHINESE BIOTA

23E9—Rapid growing, broad, upright; trim to any size and shape. Baby size, 3 to 10 inch, 35c each; 3 for 89c. Heavy, 3 ft., \$4.50 each; matched pair, 2 for \$8.50.



COLORADO SPRUCE

23E10—Green form of the famous Blue Spruce. Symmetrical and fast growing. Baby size, 5 to 6 inch, 30c each; 3 for 75c. Bushy, 15 to 18 inch, \$1.50 each; 2 for \$2.70. Heavy, 3 ft. size, \$5.00 each; matched pair, 2 for \$9.50.



PFITSERIANA JUNIPER

23E11—Our best and most popular spreading evergreen. Baby size, 6 to 9 inch, 55c each; 3 for \$1.40. Bushy, 12 inch spread, \$1.35 each; 2 for \$2.40. Heavy, 2 ft. spread, \$6.00 each; matched pair, 2 for \$11.50.



SCOTCH PINE

23E12—Tall, broad, fast growing. Baby size, 10 to 12 inch, 50c each; 3 for \$1.25. Heavy, 3 ft. size, \$5.00 each; matched pair, 2 for \$9.50.

OUR **GUARANTEE** TO YOU

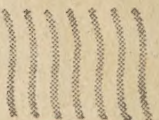
We guarantee high quality stock, exactly as represented, government inspected, true to name and to arrive safely in healthy, live growing condition. Any plants that reach you otherwise will be replaced free.

REPLACEMENTS—We guarantee our plants to grow, bloom and produce if given intelligent handling, proper planting and reasonable care. Weather conditions, carelessness, and lack of experience by the planter are conditions beyond our control; regardless of this, Spring Hill will replace any plants that fail to grow at half the original purchase price if notice is made One Month after delivery of your order. Please enter complaints immediately.

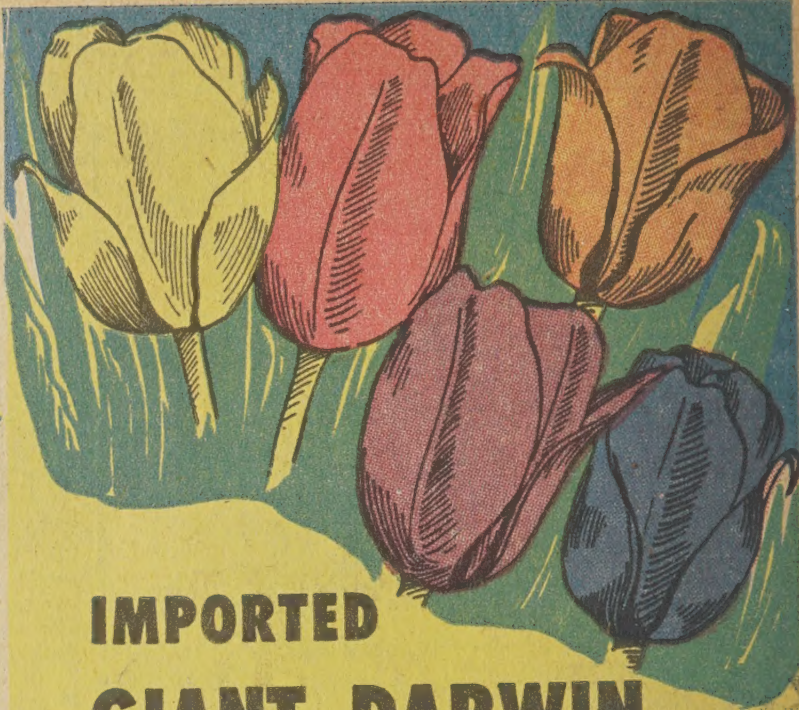
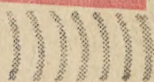
It is mutually agreed that our liability cannot be greater than your original purchase price. **GUARANTEED SATISFACTION.**

PRINTED IN U.S.A. COPYRIGHT
SPRING HILL NURSERIES CO., TIPP CITY, O.

Librarian
U.S. Department of Agriculture
Washington 25, D.C.



SEC. 562 PL&R
U.S. POSTAGE
PAID
PERMIT No. 3
TIPP CITY, O.



IMPORTED GIANT DARWIN TULIP MIXTURE

World famous for magnetic color, exquisite form, and massive size. Well balanced hand made mixture from named varieties of Red, Pink, Yellow, White, Lilac and Orange. All bloom at the same time. Unsurpassed for beds, borders and mixed plantings. **FULLY GUARANTEED.** Big, imported 1st size, 11-12 centimeter bulbs.

SPECIAL SALE PRICE

12 FOR 65¢; 25 FOR \$1.00; 100 FOR \$3.95

LOOK! Mom-Dad
SPRING HILL'S NEW
BARGAIN CATALOG
IS HERE!

INDEX

BERRIES	8-9-10-11
BULBS	4-5-6
CHRYSANTHEMUMS	14-15
EVERGREENS	22-23
FRUIT TREES	12-13
HEDGE PLANTS	7-17
PERENNIALS	6-7-20-21
ROSES	18-19
SHADE TREES	6-17
SHRUBS	6-7-16-17
VINES	17

